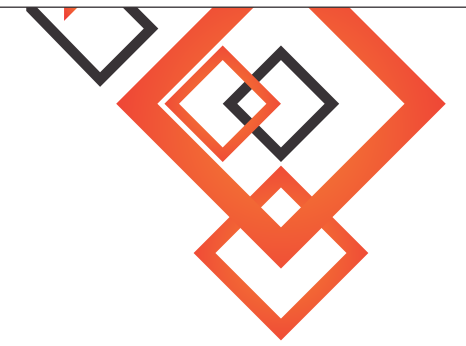


# CONTENTS



The Vision, Quality Policy, Application	2,3	Auto Melting Point Apparatus	29
Double Beam UV-VIS Spectrophotometer	4,5,6	Digital Melting Point Apparatus	30
$\mu$ P UV-VIS Spectrophotometer	7,8	Melting Point Apparatus	30
Digital UV-VIS Spectrophotometer	9	Flocculator/Jar Test Apparatus	31
Microprocessor Visible Spectrophotometer	10	Tablet Hardness Tester	32,33
Visible Spectrophotometer	11	Portable Tablet Hardness Tester	34
$\mu$ P Spectrophotometer	11	Digital Photo Fluorometer	34
Digital Spectrophotometer	12,13	Digital Tele Thermometer	35
$\mu$ P Flame Photometer	14,15	pH/Ion Meter	35
Dual Channel Flame Photometer	16	Microprocessor pH Meter	36, 37
$\mu$ p Hemoglobin Meter	16	Digital Potentiometer	38,39
Microprocessor Colorimeter	17,18	Digital pH Meter	40
Digital Colorimeter	18	$\mu$ P Based pH-EC-TDS Meter	41
Digital Photo Colorimeter	19	Microprocessors Based pH-EC Meter	41
Differential Blood Cell Counter	19	$\mu$ P Based EC-TDS-Sal Meter	42
Blood/Roller Mixer	20	$\mu$ P Conductivity/TDS Meter	42
$\mu$ P Colony Counter	21	Digital Conductivity Meter	43
Digital Colony Counter	21	Digital Conductivity / TDS Meter	44
$\mu$ P Karl Fischer Moisture Titrator	22	Digital pH, Cond. & Temp. Meter	44
Auto Karl Fischer Titrimeter	22	Digital TDS Meter	45
$\mu$ P Tablet Dissolution Test Apparatus (14 Station)	23	Digital Salinity Meter	46
$\mu$ P Dissolution Test Appartus (8/6 Station)	24,25	Digital Turbidity Meter	46,47
Tablet Dissolution Test Apparatus	25	Microprocessor DO Meter	47
$\mu$ P Disintegration Test Apparatus	26	Digital Dissolved Oxygen Meter	48
Digital Tablet Disintegration Apparatus	26	pH/Cond./TDS/Salt/Temp. Waterproof Tester	48,49
Microprocessor Friability Apparatus	27	Water & Soil Analysis Kits	50,51
Digital Friability Test Apparatus	27	Portable Digital pH Meter/ATC pH Meter	52
Microprocessor Tap Density Tester	28	Portable Digital Conductivity Meter	52
Bulk Density Apparatus	28	Portable Digital TDS Meter	52
Leak Test Apparatus	29	Portable Digital Do Meter	52



Edition 2017-18



# THE *Vision*



EI has a vision to emerge as a premier manufacturer of Scientific & Pharmaceutical Instruments. Certification to ISO 9001:2008 is a first step to realize our vision. We are also planning to take other instrument certification like CE etc. to move towards the international markets.

# Quality **POLICY**



EI has vision to Design, Develop & Manufacture High Quality Scientific & Pharmaceutical Test Equipment that result in Complete Customer Satisfaction.

**We plan to achieve this through .....**

- Continuously indentifying customer needs and communication the same with in the organization in all promptness.
- Emphasising on the Continuous Improvement in the manufacturing processes.
- Time Bound Delivery
- Organized House Keeping in the Plant.



# Applications

- Pharmaceuticals
- Dairy
- Food & Beverage
- Chemical Labs
- Agriculture
- Hospitals
- Textile
- Iron & Steel
- Fertilizers
- Petrol Chemicals
- Sewage Plants
- Blood Chemistries
- Cement
- Mineral Water Plant
- Mines & Geology
- Pollution Control
- Biotechnology
- Potable Water Plants
- Aqua Culture
- Chemical
- Metallurgy
- Plants & Dyes
- Industrial Water Disposal







## Double Beam UV-VIS Spectrophotometer - 2377

(With Variable bandwidth)

New



### SALIENT FEATURES

- Double Beam Optics
- 320 x 240 Dots Graphical LCD
- Auto Wavelength Setting at 0.1nm interval
- On-screen Standard and Kinetic Curve Display
- Tungsten/Deuterium Lamp can be turned ON/OFF Individually to Extend Lifetime
- Application Software provides complete control of the instrument from a computer through the built-in USB Port.
- Basic, WL Scan, Multi-Wavelength, Kinetic, Quantitative, DNA/Protein modes
- Pre-aligned design makes it convenient to change Lamps
- Large Sample Compartment, can accommodate 5-100 mm path-length cuvettes with optional holders. 8-Position Auto Cell Changer of 10 mm Path-length provided.
- Optional Sipper Pump

### TECHNICAL SPECIFICATIONS

➤ FUNCTION	Basic, Wavelength Scan, Multi Wavelength, Kinetics, Quantitative, DNA/Protein
➤ WAVELENGTH RANGE	190 - 1100 nm
➤ SPECTRAL BANDWIDTH (Variable)	0.5/1.0/2.0/4.0/5.0nm
➤ OPTICAL SYSTEM	Double Beam, Grating 1200 lines/mm
➤ WAVELENGTH ACCURACY	± 0.3 nm
➤ WAVELENGTH REPEATABILITY	± 0.2 nm.
➤ SCANNING SPEED	HI, MED & LOW, MAX. 3000 nm/min
➤ PHOTOMETRIC ACCURACY	± 0.3 %T or ± 0.002 A/h @1A
➤ PHOTOMETRIC RANGE	%T : 0 - 200% Abs : -0.3 to 3A Conc. : 0 - 9999 C
➤ STRAY LIGHT	< 0.05 %T @ 220 nm & 340 nm
➤ STABILITY	± 0.001 A/h @ 500 nm
➤ DISPLAY	5 Inches 320 x 240 Dots Graphical LCD
➤ BASELINE FLATNESS	± 0.001A/h (200 - 1000 nm)
➤ SAMPLE COMPARTMENT	8 cell with automatic cell changer -10 mm path-length. (50 mm & 100 mm path-length optional at extra cost)
➤ LIGHT SOURCE	Halogen & Deuterium Lamps (Pre-Aligned)
➤ PRINTER INTERFACE	Parallel port for Dot Matrix
➤ PC CONNECTIVITY	USB Port for PC Connectivity
➤ POWER	230 V ± 10% AC, 50 Hz
➤ DIMENSIONS (L x B x H)	Instrument : 590 x 455 x 250 mm (Approx.)
➤ WEIGHT	Instrument : 17.5 Kg. (Approx.)



2377

### ACCESSORIES

- Quartz Cuvettes - A Set of 2
- Glass Cuvettes - A Set of 4
- Instruction Manual
- Software Manual
- USB Data Cable for PC Connectivity
- Mains Lead
- Dust Cover



Paired Glass and Quartz Cuvettes  
Matched Pairs for less data variability



## Double Beam UV-VIS Spectrophotometer - 2375

### SALIENT FEATURES

- Double Beam Optics
- 320 x 240 Dots Graphical LCD
- Auto Wavelength Setting
- On-screen Standard and Kinetic Curve Display
- Tungsten/Deuterium Lamp can be turned ON/OFF Individually to Extend Lifetime
- Application Software provides complete control of the instrument from a computer through the built-in USB Port.
- Basic, WL Scan, Multi-Wavelength, Kinetic, Quantitative, DNA/Protein modes
- Pre-aligned design makes it convenient to change Lamps
- Large Sample Compartment can accommodate 5-100 mm path-length cuvettes with optional holders. 8-Position Auto Cell Changer of 10mm path-length provided.



2375

### TECHNICAL SPECIFICATIONS

➤ FUNCTION	Basic, Wavelength Scan, Multi Wavelength, Kinetics, Quantitative, DNA/Protein
➤ WAVELENGTH RANGE	190 - 1100 nm
➤ SPECTRAL BANDWIDTH	1.0 nm
➤ OPTICAL SYSTEM	Double Beam, Grating 1200 lines/mm
➤ WAVELENGTH ACCURACY	± 0.3 nm
➤ WAVELENGTH REPEATABILITY	± 0.2 nm.
➤ SCANNING SPEED	HI, MED & LOW, MAX. 3000 nm/min
➤ PHOTOMETRIC ACCURACY	± 0.3 %T or ± 0.002 A/h @1A
➤ PHOTOMETRIC RANGE	%T : 0 - 200% Abs : -0.3 to 3A Conc. : 0 - 9999 C
➤ STRAY LIGHT	< 0.05 %T @ 220 nm & 340 nm
➤ STABILITY	± 0.001 A/h @ 500 nm
➤ DISPLAY	5 Inches 320 x 240 Dots Graphical LCD
➤ BASELINE FLATNESS	± 0.001A/h (200 - 1000 nm)
➤ SAMPLE COMPARTMENT	8 cell with automatic cell changer - 10 mm path-length. (50 mm & 100 mm path-length optional at extra cost)
➤ LIGHT SOURCE	Halogen & Deuterium Lamps (Pre-Aligned)
➤ PRINTER INTERFACE	Parallel Port for Dot Matrix Printer
➤ PC CONNECTIVITY	USB Port for PC connectivity
➤ POWER	230 V ± 10% AC, 50 Hz
➤ DIMENSIONS (L x B x H)	Instrument : 590 x 455 x 250 mm (Approx.)
➤ WEIGHT	Instrument : 17.5 Kg. (Approx.)

### ACCESSORIES

- Quartz Cuvettes - A Set of 2
- Glass Cuvettes - A Set of 4
- Instruction Manual
- Software Manual
- USB Data Cable for PC Connectivity
- Mains Lead
- Dust Cover



Paired Glass and Quartz Cuvettes  
Matched Pairs for less data variability





## Double Beam UV-VIS Spectrophotometer - 3375 (Imported)

New

### SALIENT FEATURES

- Newly Designed Excellent Optical System
- 320\*240 LCD Display
- High-Performance
- Automatic Control Systems
- Printer Attachment Facility
- PC Connectivity through USB

### TECHNICAL SPECIFICATIONS

➤ WAVELENGTH RANGE	190 - 1100 nm
➤ SPECTRAL BANDWIDTH	1 nm
➤ WAVELENGTH ACCURACY	± 0.3 nm
➤ WAVELENGTH REPEATABILITY	± 0.1 nm
➤ PHOTOMETRIC ACCURACY	± 0.3 %T
➤ PHOTOMETRIC RANGE	-0.4A - 4A
➤ STRAY LIGHT	± 0.05%T
➤ STABILITY	± 0.001 A/h
➤ DISPLAY	320 x 240 LCD
➤ PRINTER	Optional
➤ BASELINE FLATNESS	± 0.001A/h (200 - 1000 nm)
➤ WAVELENGTH SETTING METHOD	Automatically
➤ DETECTOR	Silicon Photodiode
➤ DRIFT	± 0.0004 Abs/h
➤ LIGHT SOURCE	Imported long-life tungsten lamp and Deuterium Lamp
➤ POWER	AC 220V/50Hz or AC 110V/60Hz
➤ WEIGHT	Instrument: 18 Kg. (Approx.)



3375

### ACCESSORIES

- Quartz Cuvettes - A Set of 2
- Glass Cuvettes - A Set of 4
- Instruction Manual
- USB Data Cable for PC Connectivity
- Mains Lead
- Dust Cover

KEEP  
ASAPARE

## µP UV-VIS Spectrophotometer - 2373

### TECHNICAL SPECIFICATIONS

➤ WAVELENGTH RANGE	190 - 1100 nm
➤ SPECTRAL BANDWIDTH	2 nm
➤ OPTICAL SYSTEM	Single Beam, Grating 1200 lines/mm
➤ WAVELENGTH ACCURACY	± 0.5 nm
➤ WAVELENGTH REPEATABILITY	0.3 nm
➤ WAVELENGTH RESOLUTION	0.1 nm
➤ PHOTOMETRIC ACCURACY	± 0.3 %T or ± 0.003 A@1A
➤ PHOTOMETRIC RANGE	-0.3 to 3A, 0 - 200 %T, 0 - 9999 Conc
➤ STRAY LIGHT	0.05 %T @ 220 nm, 340 nm
➤ STABILITY	± 0.002 A/h @500 nm
➤ DISPLAY	128 x 64 Dots Graphical LCD
➤ KEYBOARD	22 Soft Touch Membrane Keys
➤ PHOTOMETRIC MODE	% Transmission, Absorbance and Concentration
➤ DETECTOR	Silicon Photodiode
➤ SAMPLE COMPARTMENT	Standard 4-Position 10 mm path-length Cuvette holder. (50 & 100mm path length at extra cost)
➤ LIGHT SOURCE	Tungsten and Deuterium Lamps
➤ OUTPUT	USB for PC Connectivity and Parallel Port for Dot Matrix Printer
➤ PC SOFTWARE	Basic PC Software provided for quantitative / kinetic analysis. Professional PC Software (Optional) for additional wavelength scan and DNA/Protein Test, available at extra cost.
➤ POWER	230 V±10% AC, 50 Hz



2373

### SALIENT FEATURES

- Scanning Spectrophotometer
- Wavelength Range 190 - 1100nm
- 128 x 64 Dot Graphical LCD
- Auto Wavelength Setting
- On-Screen Standard and Kinetic Curve Display
- Application Software provides complete control of the instrument from a computer through the built-in USB Port.
- Basic, WL Scan, Multi-Wavelength, Kinetic, Quantitative, DNA/Protein with professional PC software (optional)
- Pre-aligned design makes it convenient to change Lamps
- Large Sample Compartment, can accommodate 5 - 100 mm path-length cuvettes with optional holders.
- Complete Numeric Keypad for ease of Operation







## µP UV-VIS Spectrophotometer - 2371

### TECHNICAL SPECIFICATIONS

- WAVELENGTH RANGE 200 - 1000 nm
- SPECTRAL BANDWIDTH 2 nm
- OPTICAL SYSTEM Single Beam, grating 1200 lines/mm
- WAVELENGTH ACCURACY ± 0.5 nm
- WAVELENGTH REPEATABILITY 0.4 nm
- WAVELENGTH RESOLUTION 0.1 nm
- PHOTOMETRIC ACCURACY ± 0.5 %T or 0.003 A@1A
- PHOTOMETRIC RANGE - 0.3 to 3A, 0 - 200 %T, 0 - 9999 Conc.
- STRAY LIGHT < 0.3 %T
- STABILITY ± 0.002 A/h @500 nm
- DISPLAY 128 x 64 Dots Large Graphical LCD
- KEYBOARD Soft Touch Membrane Keys
- PHOTOMETRIC MODE % Transmission, Absorbance and Concentration
- DETECTOR Silicon Photodiode
- SAMPLE COMPARTMENT Standard 4-Position 10 mm path-length cuvette holder. (Accommodates upto 100 mm path-length cuvette with optional holder)
- LIGHT SOURCE Tungsten and Deuterium Lamps
- OUTPUT USB for PC Connectivity and Parallel Port for Dot Matrix Printer
- POWER 230 V±10% AC, 50 Hz

### SALIENT FEATURES

- Wavelength Range 200 - 1000 nm
- 128 x 64 Dot Graphical LCD
- Auto Wavelength Setting
- Tungsten/Deuterium Lamp can be turned ON/OFF Individually to Extend Lifetime
- Application Software provides complete control of the instrument from a computer through the built-in USB Port
- Pre-aligned design makes it convenient to change Lamps
- Large Sample Compartment, can accommodate 5 - 100 mm path cuvettes with optional holders

2371



## Microprocessor UV-VIS Spectrophotometer - 1371

### TECHNICAL SPECIFICATIONS

- WAVELENGTH RANGE 190 to 1000nm
- SPECTRAL BANDWIDTH 2nm
- ACCURACY ± 0.5 nm
- REPEATABILITY ± 0.3nm
- RESOLUTION 0.1nm
- PHOTOMETRIC RANGE % T : 0 to 100%, Abs. : 0 to 1.999  
Conc. : 0 to 19999, K-Factor : 0 to 19999
- ACCURACY ± 0.005 Abs at 1.0 Abs  
± 0.010 Abs at 1.5 Abs  
Less than 0.1% at 320nm
- STRAY LIGHT Less than 0.1% at 320nm
- DISPLAY 16 x 2 Line LCD back lit display & 4 digit 7-Segment LED for wavelength
- KEY BOARD 8 Keys, soft touch membrane type
- DATA STORAGE Up to 100 Samples
- PRINTER INTERFACE Printer interface for any centronics dot matrix printer
- SERIAL INTERFACE RS 232C interface (optional)
- LIGHT SOURCE a) Tungston Halogen Lamp b) Deuterium Lamp (D2)
- DETECTOR Wide range silicon photodiode
- OPTICS Complete mirror optics with resolution 1200 lines/mm grating, Czerny turner mount
- SAMPLE HOLDER 4 position adjustable sample holder
- POWER 230V ± 10%, 50 Hz. AC
- DIMENSIONS 550 x 405 x 130 mm (LxBxH) Approx.
- WEIGHT 25Kg. (Approx.)
- ACCESSORIES Quartz Cuvettes of 10 mm pathlength (A set of 2), Plastic Cuvettes : 4 Nos., Instruction Manual, Mains Lead, Dust Cover

### SALIENT FEATURES

- Covers 190 to 1000 nm
- 4 Position Cuvette Holder
- µP Based Wavelength Selection
- 16x2 Line LCD Data Display
- 4 Digit Wavelength Display
- Printer Interface
- RS-232C Computer Interface

1371



## UV-VIS Spectrophotometer - 3371

(Imported)

### SALIENT FEATURES

- Automatically Adjust 0%, 100%
- 1200Lines/mm Grating
- Large Sample Compartment

### TECHNICAL SPECIFICATIONS

- OPTICAL SYSTEM Czerny Turner Grating Monochromator
- WAVELENGTH RANGE 200 nm - 1020nm
- SPECTRAL BANDWIDTH 5 nm
- WAVELENGTH ACCURACY ± 2 nm
- WAVELENGTH REPEATABILITY <1 nm
- PHOTOMETRIC ACCURACY ± 0.5 %T
- PHOTOMETRIC REPEATABILITY 0.2 %T
- STABILITY ± 0.001A/h
- STRAY LIGHT ± 0.3%T @220nm
- PHOTOMETRIC RANGE -0.000 to 1.999A, 0-200 %T
- DISPLAY MODES 4 Digit LCD
- ZERO SETTING Automatic
- PHOTOMETRIC MODE %T, A, C
- WEIGHT 12 Kg. (Approx.)

### SALIENT FEATURES

- Range 200 to 1020nm
- 4 Position Cuvette Holder
- 3½ digit display of %T, Abs. & Concentration.
- Highly Accurate and Stable

3371



## Digital UV-VIS Spectrophotometer - 371

### TECHNICAL SPECIFICATIONS

- SPECTRAL RANGE 190 to 1000nm
- SPECTRAL BANDWIDTH 2nm
- ACCURACY ±0.5nm
- REPEATABILITY ± 0.3nm
- READ-OUT 4 Digit 7 segment red LED display for wavelength

### PHOTOMETRIC

- PHOTOMETRIC RANGE %T : 0 to 100%  
Abs. : 0 to 1.999  
Conc.: 0 to 1999
- ACCURACY ± 0.005Abs at 1.0 Abs  
± 0.010Abs at 1.5 Abs  
± 0.002Abs at 1.0 Abs  
Less than 0.1% at 320nm
- REPEATABILITY ± 1 Count
- STRAY LIGHT 3½ digit 7 segment red LED display for results
- READABILITY (a) Tungsten – Halogen Lamp  
(b) Deuterium Lamp
- DATA READOUT Wide range silicon photodiode
- LIGHT SOURCE Complete mirror optics with high Resolution 1200 grooves /mm grating, Czerny – Turner mount
- ACCURACY 4 Position sample holder
- REPEATABILITY 230V + 10% 50Hz, AC
- STRAY LIGHT 550 x 405 x 130 mm (LxBxH) (Approx)
- READABILITY 22 Kg (Approx.)
- DATA READOUT Quartz Cuvettes of 10 mm pathlength (A set of 2),
- LIGHT SOURCE Plastic Cuvettes: 4 Nos., Instruction Manual, Main Lead, Dust Cover

### APPLICATIONS

- Clinical
- Food and Drink
- Industrial
- Pharmaceutical
- Biotechnology
- Molecular Biology

371



Paired Glass and Quartz Cuvettes

Matched Pairs for less data variability







### SALIENT FEATURES

- Wavelength Range 320-1100 nm
- 128 x 64 Dot Graphical LCD
- On-Screen Standard Curve Display
- Stray Light below 0.3 %T
- Store 200 groups of data & 200 standards curves at the same time
- PC Connectivity through built-in USB Port
- Software expands the functions to Wavelength scanning, Multiwavelength, Quantative & Kinetic Modes (Optional at extra cost)
- Large Sample Compartment, can accommodate 5-100 mm path cuvettes with optional holders

**2306**

## Microprocessor Spectrophotometer - 2306

### TECHNICAL SPECIFICATIONS

- WAVELENGTH RANGE 320 - 1100 nm
- BANDWIDTH 4 nm
- WAVELENGTH ACCURACY  $\pm 1$  nm
- WAVELENGTH REPEATABILITY 0.3 nm
- WAVELENGTH SETTING Auto
- PHOTOMETRIC ACCURACY  $\pm 0.3$  %T
- PHOTOMETRIC REPEATABILITY 0.2 %T
- PHOTOMETRIC RANGE -0.3 - 3.0 A, 0 - 200 %T, 0 - 9999 C
- STABILITY  $\pm 0.002$  A/h @500 nm
- BASELINE FLATNESS  $\pm 0.002$  A/h
- STRAY LIGHT < 0.3 %T
- SAMPLE COMPARTMENT 4-Position 10mm path length cuvette holder (50 & 100 mm path length at extra cost)
- DATA OUTPUT PORT USB for PC Connectivity
- PARALLEL PORT Parallel Port for Dot Matrix printer
- DISPLAY 128 x 64 Dots Graphical LCD
- LAMPS Tungsten Halogen Lamp
- DETECTOR Silicon Photodiode
- POWER 100 - 250 V AC, 50 Hz
- ACCESSORIES Glass Cuvettes - A Set of 4, Mains Lead, Instruction Manual, Dust Cover



**3305**

## Visible Spectrophotometer - 3305 (Imported)

### SALIENT FEATURES

- Large Sample Room to Place 50mm Cuvette
- Digital Display of %T, Abs and Conc.
- Auto Light Door and ZeroSetting

### TECHNICAL SPECIFICATIONS

- OPTICAL SYSTEM Czerny-turner CT grating monochromator, 1200/mm
- WAVELENGTH RANGE 340-1020nm
- SPECTRAL BANDWIDTH 6 nm
- WAVELENGTH ACCURACY  $\pm 3$  nm
- WAVELENGTH REPEATABILITY  $\leq 1$  nm
- MEASUREMENT RANGE -0.000 to 1.999A , 0-199.9%
- PHOTOMETRIC ACCURACY  $\pm 1$ %T
- PHOTOMETRIC REPEATABILITY 0.5%T
- MEASURING OPTICAL PATH 50 mm
- STRAY LIGHT  $\pm 1.0$ %T (340 nm)
- STABILITY  $\pm 0.004$  A/h(500 nm preheat 1 hour)
- DISPLAY MODES 4 LCD
- BASIC MEASUREMENT T, A, C
- LIGHT SOURCE 6V10W
- OPERATING VOLTAGE 220V/110VAC,50-60Hz

**New**



### SALIENT FEATURES

- Microprocessor Based
- 4 Digit Seven Segment Red LED Display
- Easy to Use, Press one Button for easy switching of %T, Abs., Conc. modes
- Auto Zero and Blank
- Printer Attachment Facility
- PC Connectivity through USB built-in Port
- Large Sample Compartment, can accommodate 5-100 mm path-length cuvettes with optional holders
- 4-Position rapid cuvette changer

**2305**

## Microprocessor Spectrophotometer - 2305

### TECHNICAL SPECIFICATIONS

- WAVELENGTH RANGE 325 - 1000 nm
- SPECTRAL BANDWIDTH 4 nm
- OPTICAL SYSTEM Single Beam, Grating 1200 lines/mm
- WAVELENGTH ACCURACY  $\pm 2$  nm
- WAVELENGTH RESOLUTION 2 nm
- PHOTOMETRIC ACCURACY  $\pm 0.5$  % T
- PHOTOMETRIC REPEATABILITY 0.3 % T
- PHOTOMETRIC RANGE - 0.3 to 3.0 A, 0 - 200 % T
- STRAY LIGHT < 0.3 % T
- STABILITY  $\pm 0.002$  A/h @ 500 nm
- DISPLAY 4 Digit Seven Segment Bright Red LED Display
- KEYBOARD Soft Touch Membrane Type
- PHOTOMETRIC MODE % T, Absorbance, Concentration, Kfactor
- DETECTOR Silicon Photodiode
- SAMPLE COMPARTMENT Standard 4-Position 10 mm path-length cuvette holder (Accommodates up to 100 mm path-length cuvette with optional holder)
- LIGHT SOURCE Tungsten Lamp
- OUTPUT USB Port for PC connectivity, Parallel Port for Dot Matrix printer
- POWER 230 V  $\pm 10$ %, 50 Hz. AC
- ACCESSORIES 10 mm Glass Cuvettes - A Set of 4, Black Block, Mains Lead, Instruction Manual, Dust Cover



### SALIENT FEATURES

- Highly Accurate & Stable
- Range 340 to 960 nm
- 16x2 line backlit LCD Display
- Printer Attachment Facility
- Storage for 100 samples
- RS232C Computer Interface (optional)
- Soft Touch Membrane Keys

**1305**

## μP Spectrophotometer - 1305

### TECHNICAL SPECIFICATIONS

- RANGE 340 to 960 nm
- RESOLUTION 0.1% T, Abs : 0.001, Conc. : 1
- OUTPUT % T: 0 to 100%, Abs : 0 to 1.999, Conc. : 0 to 19999
- DETECTOR Silicon Photodiode
- LIGHT SOURCE 6 V, 10 W, Tungsten Halogen Lamp
- MONOCHROMATOR 600 lines/mm diffraction grating
- SAMPLE HOLDER 10 mm glass cuvettes
- SPECTRAL BANDWIDTH < 5 nm
- WAVELENGTH RESOLUTION 1 nm
- WAVELENGTH ACCURACY  $\pm 1$  nm
- REPEATABILITY  $\pm 2$  nm
- DISPLAY 16x2 line alphanumeric backlit LCD display
- OPERATING TEMP. RANGE 5° to 45°C
- POWER 230 V  $\pm 10$ % AC, 50 Hz
- DIMENSIONS (LxBxH) 475 x 285 x 130 mm (Approx.)
- WEIGHT 8.5 Kg. (Approx.)
- ACCESSORIES Matched Cuvettes : 1 Set of 2, Dust Cover : 1 No. Instruction Manual : 1 No.





## Digital Spectrophotometer - 302

### SALIENT FEATURES

- Range 340 to 960 nm
- 3½ Digital Display for Data
- Highly Stable & Accurate
- Direct Concentration Facility
- Two Cuvettes Position Available

### TECHNICAL SPECIFICATIONS

- RANGE 340 to 960nm
- RESOLUTION 0.1%T, Abs. 0.001, Conc. 1.0
- OUTPUT %T: 0 to 100%, Abs : 0 to 1.999, Conc.: 0 to 1999
- DIRECTOR Silicon Photodiode
- LIGHT SOURCE 6V, 10W, Tungsten Halogen Lamp
- MONOCHROMATOR 600 lines/ mm holographic grating
- SAMPLE HOLDER 10 mm Test Tube & 3-Position rapid cuvette changer
- SPECTRAL BANDWIDTH 10nm
- WAVE LENGTH RESOLUTION 1nm
- WAVELENGTH ACCURACY ± 2.5nm
- REPEATABILITY ±2 nm
- RECORDER OUTPUT Available
- DISPLAY 3½ Digit Bright Red LED Dual Display for Data & Wavelength
- POWER 230±10%AC, 50Hz
- DIMENSIONS L 475 X B 285 X H 130 mm (Approx.)
- WEIGHT 8.5 Kg. (Approx.)
- ACCESSORIES Cuvettes (10 mm path length): 2 nos., Operation Manual, Dust Cover.



### Applications

- Organic compounds in Biological matter
- Glucose, Carbohydrates & Proteins etc., in foods
- Alcohols In Beverages
- Purity of constituents in Pharmaceuticals
- Toxic elements, Cd, Pb, Hg etc. in effluents

302

## Digital Spectrophotometer - 301

### TECHNICAL SPECIFICATIONS

- RANGE 340 to 960 nm
- RESOLUTION 0.1% T, Abs. 0.001, Conc. 1.0
- OUTPUT % T: 0 to 100%, Abs : 0 to 1.999, Conc.: 0 to 1999
- DETECTOR Silicon Photodiode
- LIGHT SOURCE 6V, 10W, Tungsten Halogen Lamp
- MONOCHROMATOR 600 lines/ mm holographic grating
- SAMPLE HOLDER 10mm Test Tubes
- SPECTRAL BANDWIDTH 10nm
- WAVE LENGTH ACCURACY 5nm
- WAVELENGTH ACCURACY ±2.5 nm
- REPEATABILITY ± 2nm
- RECORDER OUTPUT Available
- DISPLAY 3½ Digit Bright Red LED Display
- POWER 230V ±10%AC, 50Hz
- DIMENSIONS L 475 X B 285 X H 130mm (Approx.)
- WEIGHT 8.5 Kg. (Approx.)
- ACCESSORIES \* Cuvettes (10 mm path length) : 2 Nos.
- \* Dust Cover : 1 No.
- \* Operation Manual : 1 No.



1305

### SALIENT FEATURES

- Range 340 to 960nm
- 3½ Digital Display for Data
- Highly Stable & Accurate
- Direct Concentration Facility

## Digital Spectrophotometer - 304 & 305

### TECHNICAL SPECIFICATIONS

- RANGE 340 to 960 nm
- RESOLUTION 0.1% T, Abs : 0.001, Conc. : 1
- OUTPUT % T: 0 to 100%, Abs : 0 to 1.999, Conc. : 0 to 1999,
- DETECTOR Silicon Photodiode
- LIGHT SOURCE 6 V, 10 W, Tungsten Halogen Lamp
- MONOCHROMATOR 600 lines/mm holographic grating
- SAMPLE HOLDER 10 mm Glass Cuvette & provision for 50 mm Cuvette available in Model - 304  
10 mm Glass Cuvette in Model - 305
- SPECTRAL BANDWIDTH 5 nm
- WAVELENGTH RESOLUTION 1 nm
- WAVELENGTH ACCURACY ± 2.5 nm
- REPEATABILITY ± 2 nm
- RECORDER OUTPUT Available
- DISPLAY 3½ Digit Bright Red LED Dual Display for Data & Wavelength
- OPERATING TEMP. RANGE 5° to 45°C
- POWER 230 V±10% AC, 50 Hz
- DIMENSIONS (LxBxH) 475 x 285 x 130 mm (Approx.)
- WEIGHT 8.5 Kg. (Approx.)
- ACCESSORIES Cuvettes (10 mm) : 2 Nos. Dust Cover : 1 No. Operation Manual : 1 No.



305

### SALIENT FEATURES

- Range 340 to 960 nm
- Dual Digital Display for Wavelength & Data
- Wavelength Resolution 1 nm
- Highly Stable & Accurate
- Direct Concentration Facility
- 10 mm & 50 mm path length (304 only)



### Paired Glass Cuvettes

Matched Pairs for less data variability

KEEP A SPARE





## µP Flame Photometer - 1385 & 1382

### SALIENT FEATURES

- Auto Gas Cutoff Facility (Model - 1385 only)
- Auto Flame Failure Detection Facility (Model - 1385 only)
- µP Based With Printer Interface
- Five Element Measurement In Single Aspiration of the Sample
- Curve Calibration Programmability using Maximum of 25 Standards
- Data Processing Through Curve Fitting Techniques - Least Squares, Quadratic
- Multiple Calibration Curves Saving Facility
- Samples Data Storage Facility
- Online Help Key
- Printer Attachment Facility
- Measurement in ppm & meq
- Useful For Both Medical & Soil Testing Applications
- Setup Storage Facility up to 10 setups files
- Supplied with Compressor Unit

### TECHNICAL SPECIFICATIONS

RANGE		General Range	Serum Range	Urine Range
ppm	meq/l		meq/l	meq/l
Na : 0-100	Upto 250 meq/l, 1:100 dil.	0-200 meq/l, 1:100 dil.	0-250 meq/l, 1:100 dil.	0-100 meq/l, 1:100 dil.
K : 0-100	Upto 250 meq/l, 1:100 dil.	0-10 meq/l, 1:100 dil.	0-10 meq/l, 1:100 dil.	0-10 meq/l, 1:2 dil.
Ca : 0-100	Upto 250 meq/l, 1:100 dil.	-	-	-
Li : 0-100	Upto 250 meq/l, 1:100 dil.	0-2 meq/l, 1:5 dil.	-	-
Ba : 30-3000	(all meq values are claimed with appropriate dilution)	-	-	-

**SENSITIVITY** General Mode : Na: 0.5 ppm, K: 0.5 ppm, Li: 0.5 ppm, Ca: 15 ppm Ba: 30 ppm  
**FILTERS** Na & K Supplied (Ca, Li & Ba are optional at extra cost) {Ba can be factory fitted only}  
**RESOLUTION** 0.1 ppm / 0.1 meq.  
**REPRODUCIBILITY** < 1% coefficient of variation for 20 consecutive samples using 10 ppm Na set as Maximum Standard up to 3% CV for 20 consecutive samples of Concentrations between 50 to 199 ppm for Barium.  
**LINEARITY** < 2% error when 3 ppm Na/K and 5 ppm Li are set as Maximum Std.  
**CURVE FIT ACCURACY** ± 2% of FS  
**DISPLAY** 20 x 4 Character alphanumeric LCD display with Backlit  
**AVERAGE TIME** In-built in Software  
**FLAME SYSTEM** LPG & Dry Oil Free Air  
**DETECTOR** Photodiode  
**CALIBRATION** with up to 25 Standards of user choice with curve fitting software (5 for each Element). Multiple Calibration Curves can be stored in the memory  
**GAS CONTROL** Adjustable with knob  
**FLAME FAILURE** Auto Detection (Model - 1385 only)  
**GAS CUTOFF** Automatic (Model - 1385 only)  
**IGNITION SYSTEM** Auto Ignition  
**AUTOMISER** Axial Flow Type  
**DIMENSIONS** Instrument : 365 x 245 x 220 mm Approx. (LxBxH)  
**PRINTER** Provision for attachment of Dot-Matrix Printer with centronics parallel interface  
**RS 232 INTERFACE** Available (PC software at extra cost)  
**WEIGHT** Main Unit : 8 Kg. (Approx.)  
**POWER SUPPLY** 230 V AC ± 10%, 50 Hz

### COMPRESSOR UNIT

- Air Supply : By oil free mini compressor unit with pressure regulator
- Combustion Gas LPG : Controlled by precision regulator
- Power : 230 V + 10% AC, 50 Hz
- Dimensions (L x B x H) : 290 x 255 x 210 mm (Approx.)
- Box : 370 x 358 x 300 mm
- Weight : 8 kg. (Approx.)
- Box : 10 kg (Approx.)



## Microprocessor Flame Photometer - 1381

### TECHNICAL SPECIFICATIONS

	ppm	Meq/l	Urine
	General	Serum	
➤ RANGE	Na : 0.1 to 100 K : 0.1 to 100 Ca : 15 to 100 Li : 0.5 to 100	Na : 0-200, 1:100 dil., K : 0-10, 1:100 dil., Ca : - Li : 0-2, 1:5 dil.,	0-250, 1:100 dil. 0-100, 1:100 dil. - 0-10, 1:2 dil.
➤ FILTERS	Na & K supplied (Ca & Li are optional at extra cost)		
➤ SENSITIVITY	0.1 ppm		
➤ ACCURACY	± 1% up to 40 ppm, ± 2% above 40 ppm		
➤ READOUT	5 digit seven segment bright red LED display		
➤ FLAME SYSTEM	LPG & dry oil free air		
➤ DETECTOR	Photodiode		
➤ CALIBRATION	3 point calibration		
➤ POWER	230 V ± 10% AC, 50 Hz		
➤ WEIGHT	Main Unit : 8 Kg. (Approx.) Compressor : 8 Kg. (Approx.)		
➤ DIMENSIONS	365 x 245 x 220 mm (Approx.) (L x B x H)		
➤ AIR SUPPLY	By oil free mini compressor unit with pressure regulator		
➤ COMBUSTION GAS	LPG		
➤ ATOMIZER	Axial flow type		
➤ BURNER	Stainless Steel		



### SALIENT FEATURES

- 5 Digit Seven Segment bright red LED display (Model - 1381)
- 2½ Digit Seven Segment bright red LED display (Model - 381)
- Narrow Band Interference Filters
- Single Channel
- Mixing Chamber designed for stable flame
- Stainless Steel round burner
- Concentric Non-Corrosive Nebulizer

## Microprocessor Flame Photometer - 381

### TECHNICAL SPECIFICATIONS

➤ RANGE	Na : 0-100 ppm K : 0-100 ppm Ca : 15-100 ppm (Optional) Li : 10-100 ppm (Optional)
➤ SENSITIVITY	Sodium (Na) : 5 ppm Potassium (K) : 5 ppm Calcium (Ca) : 10 ppm (Optional at extra cost) Lithium (Li) : 10 ppm (Optional at extra cost)
➤ READOUT	2½ digit bright red LED display
➤ ACCURACY	± 2% up to 40 ppm, ± 5% above 40 ppm
➤ IGNITION SYSTEM	Auto ignition
➤ DIMENSIONS	375 X 245 X 220 mm (Approx.)
➤ WEIGHT	8 Kg. (Approx.)
➤ MEASUREMENT SYSTEM	Measurements one element at a time
➤ REPEATABILITY	± 2 Counts
➤ DETECTOR	Silicon Photodiode
➤ FILTERS	Na & K supplied (Ca & Li are optional at extra cost)
➤ NEBULIZER	Black bakelite, axial flow type
➤ FLAME SYSTEM	LPG and dry oil free air
➤ WARM UP TIME	10 minutes
➤ POWER	230V ± 10% AC, 50Hz



### COMPRESSOR UNIT (For all Flame Photometers)

- Air Supply : By oil free mini compressor unit with pressure regulator
- Combustion Gas LPG : Controlled by precision regulator
- Power : 230 V ± 10% AC, 50 Hz
- Dimensions : 290 x 255 x 210 mm (Approx.) (L x B x H)

\*Note: All Flame Photometers are supplied with Compressor Unit.







### COMPRESSOR UNIT

- Air Supply : By oil free mini compressor unit with pressure regulator
- Combustion Gas LPG : Controlled by precision regulator
- Power : 230 V + 10% AC, 50 Hz
- Dimensions (L x B x H) : 290 x 255 x 210 mm Approx.)
- Box : 370 x 358 x 300 mm
- Weight : 8 kg. (Approx.)
- Box : 10 kg (Approx)

**391**

## Dual Channel Flame Photometer - 391/392

### SALIENT FEATURES

- Dual Channel
- Model 391 for Clinical use in meq
- Model 392 for General use in ppm
- Stainless steel round burner
- Concentric Non-Corrosive Nebulizer
- Narrow Band interface Filters
- Dual 2½ digit red LED display

### TECHNICAL SPECIFICATIONS

	391	392
➤ RANGE	Sodium (Na) : Serum 0-200 meq/l : Urine 0-200 meq/l	0-100 ppm
	Lithium (Li) : Serum 0-2 meq/l(optional) Potassium (K) : Serum 0-10 meq/l : Urine 0-100 meq/l	0-100 ppm 0-100 ppm
	Calcium (Ca) : Urine 0-10 meq/l (optional)	0-100 ppm
	mEq values are claimed with appropriate dilution	
➤ ACCURACY	± 2% up to 100 meq ± 5% above 100 meq	± 2% up to 40 ppm ± 5% above 40 ppm
➤ READOUT	Dual 2½ digit bright red LED displays	
➤ IGNITION SYSTEM	In-built electronic Ignition by press of a knob	
➤ DIMENSIONS	375 X 245 X 220 mm (Approx.)	
➤ WEIGHT	8 Kg. (Approx.)	
➤ MEASUREMENT SYSTEM	Simultaneous measurement of 2 elements on dual LED display	
➤ REPEATABILITY	± 2 Counts	
➤ DETECTOR	Silicon Photodiode	
➤ FILTERS	Narrow band interference glass filters (Na, K Filters are Supplied, Ca & Li filters are optional at extra cost)	
➤ NEBULIZER	Black bakelite, axial flow type	
➤ FLAME SYSTEM	LPG and dry oil free air	
➤ WARM UP TIME	10 minutes	
➤ COMPRESSOR UNIT	Supplied along with the instrument	
➤ POWER	230V±10% AC, 50Hz	

## µp Haemoglobin Meter - 1315

### TECHNICAL SPECIFICATIONS

➤ MEASURING METHODS	Cyanmethaemoglobin
➤ MEASURING RANGE	0-30g/dl of Hb
➤ DISPLAY	3 digit 7 segment LED
➤ KEY PAD	Soft Touch Membrane Type
➤ ZERO SETTING	Automatic
➤ DILUTION RATIO	1:25l
➤ SAMPLE VOLUME	1ml
➤ CALIBRATION	Automatic
➤ WAVELENGTH	546 nm
➤ DETECTOR	Highly sensitivity silicon photodiode
➤ POWER SUPPLY	230 ± 10% V AC 50 Hz
➤ WEIGHT	1.5 Kgs. (Approx.)
➤ ACCESSORIES	Glass Test Tubes, Operation Manual, Dust Cover

### SALIENT FEATURES

- Direct Display in Hb Units
- 1ml Sample Volume
- Highly Accurate and Easy to Operate
- Storage of Factor in Memory

**1315**



**1312**

## Microprocessor Colorimeter - 1312

### TECHNICAL SPECIFICATIONS

➤ WAVE LENGTH RANGE	400 to 700 nm
➤ RESOLUTION	1 %T, 0.01Abs., 0.01 Conc., 1 K-Factor
➤ % TRANSMISSION	0 – 100 % T
➤ ABSORBANCE	0 – 1.99 A
➤ CONCENTRATION	0 – 19999 C
➤ K FACTOR	1 – 19999
➤ PHOTO DETECTOR	Silicon Photodiode / Photo Cell
➤ DISPLAY	16x2 line alphanumeric LCD display with backlit
➤ KEYBOARD	8 Keys, soft touch membrane keys
➤ DATA STORAGE	Up to 100 Samples
➤ LIGHT SOURCE	Special LED Light Source
➤ SAMPLE SYSTEM	10 mm path length matched glass test tubes
➤ FILTERS	400, 450, 490, 520, 540, 570, 620, 680 nm
➤ PRINTER INTERFACE	Centronics interface for any Dot Matrix printer
➤ WEIGHT	2.5 Kg.
➤ POWER SUPPLY	230V AC ±10%, 50Hz. with in-built stabilizer

### SALIENT FEATURES:

- Direct Concentration Facility
- Range from 400 to 700 nm
- 16 x 2 line LCD with Backlit
- Printer Attachment facility
- Storage for 100 Samples
- Soft Touch Membrane Keys

## µP Photo Colorimeter - 1313

### SALIENT FEATURES

- Direct Concentration & K Factor Facility
- % Transmission and Absorbance Modes
- Auto Zeroing Facility
- Range 400 to 700 nm
- Soft Touch Membrane Keys
- Low Cost

### TECHNICAL SPECIFICATIONS

➤ WAVELENGTH RANGE	400 to 700 nm
➤ RESOLUTION	1 % T, 0.01 Abs., 0.1 Conc. , 1 KFactor
➤ % TRANSMITTANCE	0 - 100%
➤ ABSORBANCE	0 - 1.99 A
➤ CONCENTRATION	0.1-199
➤ K FACTOR	1.0 - 999
➤ PHOTO DETECTOR	Silicon Photodiode/Photo Cell
➤ DISPLAY	3 Digit 7 Segment Bright Red LED Display
➤ KEYBOARD	3 Keys, Soft touch type
➤ AUTO ZEROING	Available
➤ LIGHT SOURCE	Special LED Light Source
➤ SOLUTION VOLUME	1 ml (Minimum)
➤ SAMPLE SYSTEM	10 mm path length matched glass test tubes
➤ OPTICAL FILTERS	8 filters mounted on the turret 400, 450, 490, 520, 540, 570, 620, 680 nm
➤ POWER SUPPLY	230V ± 10% AC 50Hz. with in-built stabilizer
➤ ACCESSORIES	A Set of Matched Test Tubes, Operation Manual, Dust Cover

**1313**







## µP Photo Colorimeter - 1311

1311



### SALIENT FEATURES

- Highly Accurate & Stable
- % Transmission and Absorbance Modes
- Auto Zeroing Facility
- Range 400 to 700 nm
- Soft Touch Membrane Keys
- Low Cost

### TECHNICAL SPECIFICATIONS

- WAVELENGTH RANGE 400 to 700 nm
- RESOLUTION 1% T, 0.01 Abs
- % TRANSMITTANCE 0-100%
- ABSORBANCE 0 - 1.99 A
- PHOTO DETECTOR Silicon Photodiode/Photo Cell
- DISPLAY 3 Digit 7 Segment Bright Red LED Display
- KEYBOARD 2 Keys, Soft touch membrane type
- AUTO ZEROING Available 0.00 for Abs. and 100% for % T
- LIGHT SOURCE Special LED Light Source
- SOLUTION VOLUME 1 ml (Minimum)
- SAMPLE SYSTEM 10 mm path length matched glass test tubes
- OPTICAL FILTERS 8 filters mounted on the turret  
400, 450, 490, 520, 540, 570, 620, 680 nm
- POWER SUPPLY 230V ± 10% AC 50Hz. with in-built stabilizer
- ACCESSORIES A Set of Matched Test Tubes, Operation Manual, Dust Cover



312

## Digital Colorimeter - 312 & 313



### SALIENT FEATURES

- Microcontroller Based
- 1ml sample volume
- Range from 400 to 700nm
- Highly Stable & Accurate
- Battery/Mains operated Colorimeter also Available
- Auto Zero Facility

### TECHNICAL SPECIFICATIONS

- WAVE LENGTH RANGE 400 to 700 nm
- OPTICAL FILTERS 8 filters mounted on the turret  
400, 450, 490, 520, 540, 570, 620, 680 nm
- SAMPLE SIZE 1ml
- SAMPLE SYSTEM 10mm path length matched glass test tubes
- DISPLAY 2½ digit 7 segment red LED display
- LIGHT SOURCE LED
- READOUT 0 to 1.99 Abs.
- DETECTOR Silicon Photodiode
- POWER 230V±10% AC, 50Hz.
- DIMENSIONS 192 x 230 x 105mm (LxBxH)
- WEIGHT 1.5 Kgs. (Approx.)

### FOR DETERMINATION OF CONCENTRATION OF CONSTITUENTS IN:

- Clinical, Pharmaceutical, Food
- Beverage & Water Analysis
- Analytical & Agricultural Chemistry
- Metallurgy
- Blood

## Digital Photo Colorimeter - alpha 03

alpha 03



### SALIENT FEATURES

- 1ml sample volume
- Range from 400 to 700nm
- Highly Stable & Accurate
- Very Economical
- Battery/Mains operated Colorimeter also Available

### TECHNICAL SPECIFICATIONS

- DISPLAY 2 ½ Digit LED
- RANGE 400 - 700 nm
- OUTPUT Abs : 0 to 1.99
- RESOLUTION Abs : 0.01
- ACCURACY 0.5% FS ±1 Digit
- DETECTOR Photodiode
- FILTERS 8 filters - 400, 450, 490, 520, 540, 570, 620, 680nm
- LIGHT SOURCE LED
- MINIMUM VOLUME 1 ml
- POWER 230 V ± 10% AC, 50Hz
- DIMENSIONS 192 x 230 x 105mm (LxBxH)
- WEIGHT 1.5 Kg. (Approx.)

### ACCESSORIES

- \* Test Tube Set of 5,
- \* Dust Cover, Instruction
- \* Manual.



368



## Differential Blood Cell Counter - 368

### SALIENT FEATURES

- Facility to count 8 Types of Cells
- 16x2 Line Alphanumeric LCD Display
- Automatic percentage (%) calculation
- Individual cells counting facility
- In-built Stop Watch and Timer function
- Audible beep facility

### TECHNICAL SPECIFICATION

- CELL COUNTING KEY 8 Keys
- TOTAL KEYS 11 Keys (8 Cell keys and 3 Function keys)
- BODY Metal Body
- DISPLAY 16x2 Line LCD Display
- MAINS INPUT 230V ± 10% AC, 50 Hz
- WEIGHT 1.5 kg (Approx.)
- DIMENSIONS 250 x 230 x 150 mm (LxBxH)





## Digital Blood/Roller Mixer - 1524

### SALIENT FEATURES

- Rocking and rolling action for complete Mixing
- Four roller design with small footprint
- Designed for continuous quiet operation
- Ambient temperature range +4°C to +60°C

### TECHNICAL SPECIFICATIONS

- MODEL 1524
- ROLLER SIZE 230mm length
- CONTROL Digital
- NO. OF ROLLERS 4
- SPEED 33rpm (Approx.)
- MAXIMUM LOAD 5
- TIMER Continuous or timer operation
- POWER SUPPLY 230V ± 10% AC 50Hz.



1524

New

## Blood/Roller Mixer - 524

### SALIENT FEATURES

- Rocking and rolling action for complete Mixing
- Four roller design with small footprint
- Designed for continuous quiet operation
- Ambient temperature range +4°C to +60°C

### TECHNICAL SPECIFICATIONS

- MODEL 524
- ROLLER SIZE 230mm
- CONTROLS Analog
- NO. OF ROLLERS 4
- SPEED 33rpm (Approx.)
- MAXIMUM LOAD 5
- TIMER No
- POWER SUPPLY 230V ± 10% AC 50Hz.



524

New

## µP Colony Counter - 1361, 1362 & 1363

### SALIENT FEATURES

- Readout from 0 - 999999 Counts (Model 1363)
- Count Correction Facility
- Average Mode
- Result-Count Storage
- Audible Confirmation of Each Count
- Auto Marker Pen
- Uniform Glare Free Illumination
- Wolffhugel Glass Grid with Focussing Facility
- LED Based Illumination

### TECHNICAL SPECIFICATIONS

- DISPLAY 3 - Digit Seven Segment LED in Model 1361  
4 - Digit Seven Segment LED in Model 1362  
6 - Digit Seven Segment LED in Model 1363
- MAX COUNT 999 in Model 1361, 9999 in Model 1362 & 999999 in Model 1363
- KEYBOARD 6 soft touch membrane keys
- CORRECTION Count correction facility available to cancel the unwanted counts
- STORAGE 100 Result-count storage retained even if the system is switched off
- AVERAGE Average mode facility available
- DISH SIZE 110 mm
- MAGNIFICATION x 1.7 surface magnification
- DIMENSIONS (L x B x H) 255 x 220 x 100 mm (Approx.)
- WEIGHT 3 Kg. (Approx.)
- POWER 230 V±10% AC, 50 Hz



1363



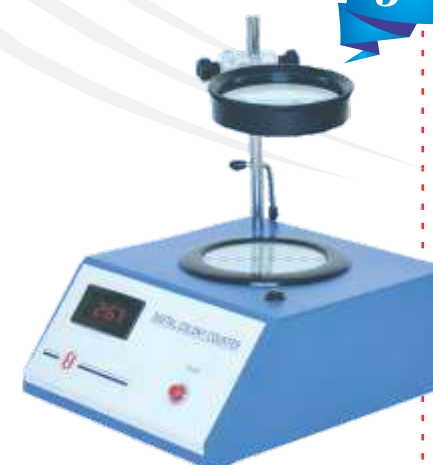
## Digital Colony Counter - 361, 362 & 363

### SALIENT FEATURES

- 110mm Dia Magnifying Glass
- Audible Confirmation of each count
- Uniform glare free illumination
- Digital Readout from 0-999 (Model 361)
- Digital Readout from 0-9999 (Model 362)
- Digital Readout form 0-999999 (Model 363)
- Auto Marker pen
- Wolffhugel glass grid focusing facility

### TECHNICAL SPECIFICATIONS

- DIGITAL DISPLAY 3 digit, 999 Maximum Count (Model 361)  
4 digit, 9999 Maximum Count (Model 362)  
6 Digit, 999999 Maximum Count (Model 363)
- DISH SIZE 110 mm
- MAGNIFICATION x 1.7
- DIMENSIONS 255 x 220 x 100 mm (Approx.) L x B x H
- WEIGHT 3 Kg. (Approx.)
- POWER 230 V ± 10%, 50 Hz. AC
- ACCESSORIES Marking Pen, Magnifier Lens, Dust Cover



362







## µP Karl Fischer Moisture Titator - 1760

### TECHNICAL SPECIFICATIONS

- MEASURING RANGE 50ppm to 100% of moisture
- MEASURING METHOD Karl Fischer volumetric titration method
- KF DISPENSING Highly sensitive motorized dispensing system
- TITRANT VOLUME RESOLUTION 0.01 ml
- TRITRANT VOLUME INDICATION 0.00 to 99.99 ml on Display
- MOISTURE CONTENT CALCULATION (AUTO) %age: (0.00 to 100%)  
ppm : (10 to 999999)  
mg H<sub>2</sub>O: (0.00 to 999.99)
- KF FACTOR In built automatic KF Titer Factor Calculation facility
- END POINT ALARM Visual LED and Audible Alarm
- WAIT TIME (END POINT ALARM) Adjustable (1 to 59 seconds)
- DISPENSING PUMP CAL Available through Keyboard
- MDF CALIBRATION By weight, through DST or through 25µl H<sub>2</sub>O
- KEYBOARD 24 keys soft touch, membrane type
- SAMPLE STORAGE Up to 20 latest samples using FIFO memory
- DISPLAY 8 digit bright red, seven segment LED display
- CLOCK In-built clock with date, time display
- STIRRER In-built magnetic stirrer with adjustable speed
- REAGENT BOTTLE 3x250 ml bottles for KF Reagent, Acetone & Calcium Chloride
- PRINTER INTERFACE External Dot matrix Printer interface available
- POWER 230V ± 10% 50Hz AC
- DIMENSIONS L x 360 x B x 295 x H x 175mm (Approx.)



### SALIENT FEATURES

- Microprocessor Based Technology
- Auto Computation of Moisture in ppm, %age & mg H<sub>2</sub>O
- Storage of Date, Time, Batch No. and Final Results
- 8 Digit Digital Display
- Motorized Dispensing
- External Printer Attachment Facility

1760

## Auto Karl Fischer Titrimeter - 761

### SALIENT FEATURES

- Auto Titration Control
- Auto Zero Burette
- Adjustable Timer
- Visual & Audible Alarm

### TECHNICAL SPECIFICATIONS

- DISPLAY Array of 10 LEDs
- SAMPLE SIZE 1-50mg of H<sub>2</sub>O
- INDICATION RUN, ADD, END LED's
- KF FLOW Auto Control Valve
- BURETTE Auto Zero 10ml Burette
- TIMER Adjustable Timer
- DISPENSING RESOLUTION 0.05ml
- MEASURING ELECTRODE Dual Platinum KF Electrode
- POWER 230 V ± 10%, 50 Hz. AC



## USP/IP Compliant

## µP Tablet Dissolution Test Apparatus (14 Station) - 2914

New

### SALIENT FEATURES

- 14 Station (Model - 2914)
- 12 Station (Model - 2912)
- Complies with USP, IP specifications
- Extremely useful for pharmaceutical labs
- Programmable stirrer control (25 to 200 RPM)
- 20 x 4 line alphanumeric LCD display with backlit
- 19 Soft touch membrane type keys
- 20 independent programmable setups for routine & sustain mode with storage
- 200 sample storage facility
- Printer attachment facility
- Audio visual indicators for system status
- Easy to empty and clean water bath with bottom drainage
- Continuation of last sample run in case of power failure

2914



### TECHNICAL SPECIFICATIONS

#### GENERAL

- STATIONS 14 stations in Model – 2914  
12 stations in Model – 2912
- DISPLAY 20 x 4 line alphanumeric LCD display with backlit
- KEYBOARD 19 soft touch membrane type keys
- LED'S 4 LED's for different status indications. 3 LED's for test status like Run, Alarm, End & 1 LED for heater ON/OFF status
- SETUP DATA 20 different test setups available in routine and sustain modes
- PRINTER ATTACHMENT Provision for the attachment of dot-matrix printer with centronics parallel port interface available

#### STIRRER

- SPEED 25 to 200 RPM ±1 RPM
- RESOLUTION 1 RPM
- ACCURACY ± 1 RPM

#### TEMPERATURE

- RANGE 30 to 50 C
- ACCURACY ± 0.2 C
- TEMP. CONTROL Microprocessor based using PT100/ Semiconductor sensor as per IP/USP

#### SAMPLE

- REACTION VESSEL 1000 ml jar with stirrer pedal and basket
- HEATER 1250 W x 2 Nos
- POWER 230 V ± 10%, 50 Hz. AC







USP/IP Compliant

## µP Dissolution Test Apparatus - 1918 & 1916

### TECHNICAL SPECIFICATIONS

#### GENERAL

- STATIONS Model - 1918 - 8 Station  
Model - 1916 - 6 Station
- DISPLAY 20 x 4 Line Alphanumeric LCD display with Backlit
- KEYBOARD 19 soft touch membrane keys
- LED'S 4 LED's available for different status indications. 3 LED's for Test status like Run, Alarm, End and one LED for heater ON/OFF status.
- PROGRAMMABLE SETUPS Facility for 20 different test setups available in Routine and Sustain modes.
- PRINTER ATTACHMENT Provision for the attachment of dot-matrix printer with centronics parallel port interface available.

#### STIRRER

- SPEED 25 to 200 RPM ±1 RPM
- RESOLUTION 1 RPM
- ACCURACY ±1 RPM

#### TEMPERATURE

- RANGE 30 °C to 50 °C
- ACCURACY ± 0.2 °C
- TEMP. CONTROL Microprocessor based using PT100/ Semiconductor sensor as per USP/IP

#### SAMPLING

- REACTION VESSEL 1000 ml jar with stirrer pedal and basket
- HEATER 1800W
- POWER 230 V±10% AC, 50 Hz

### STANDARD ACCESSORIES

- Main Unit with Acrylic Tank, Rectangular Cover Plate and Water Bath Temperature Sensor (T1) : 1 No.
- Reaction Vessel Capacity 1000 ml (1918 - 8 Nos., 1916-6 Nos.) : 1 Set
- Round Acrylic Cover Plate with Hole and a Large Slit (1918 - 8 Nos., 1916-6 Nos.) : 1 Set
- S.S. Paddles, Stirrer Shaft, S.S. Wire Mesh Basket : 1 Set
- External Temperature Sensor (T2) for Vessel : 1 No.
- Glass Pipettes with Rubber Bellows : 3 Nos.
- Instruction Manual : 1 No.
- Dust Cover : 1 No.



1918

### SALIENT FEATURES

- 8 Station (Model - 1918)
- 6 Station (Model - 1916)
- Complies with USP, IP Specifications
- Extremely Useful for Pharmaceutical Labs
- Programmable Stirrer Control (25 to 200 RPM)
- 20 x 4 Line Alphanumeric LCD Display with Backlit
- 19 Soft Touch Membrane Type Keys
- 20 Independent Programmable Setups for Routine & Sustain Analysis with Storage Facility
- 200 Samples Storage Facility
- Printer Attachment Facility
- Audio Visual Indicators for System Status
- Easy to Empty and Clean Water bath with Bottom Drainage
- Continuation of last Sample Run in case of Power Failure



AN ISO 9001: 2008 CERTIFIED CO.

## µP Dissolution Test Apparatus - 1912

### TECHNICAL SPECIFICATIONS

#### GENERAL

- DISPLAY 20 x 4 Line Alphanumeric LCD display with Backlit
- KEYBOARD 15 soft touch membrane keys
- LED'S 4 LED's available for different status indications. 3 LED's for Test status like Run, Alarm, End and one LED for heater on/off status. Facility for 20 different test setups available in Routine and Sustain mode.
- SETUP DATA Provision for the attachment of dot-matrix printer with centronics parallel port interface available.
- PRINTER

#### STIRRER

- SPEED 25 - 160 RPM ±1 RPM
- RESOLUTION 1 RPM
- ACCURACY ±1 RPM
- DEPTH ADJUSTMENT 25 mm to 40 mm

#### TEMPERATURE

- RANGE 20 °C(Ambient) to 40 °C
- ACCURACY ± 0.2 °C

#### SAMPLING

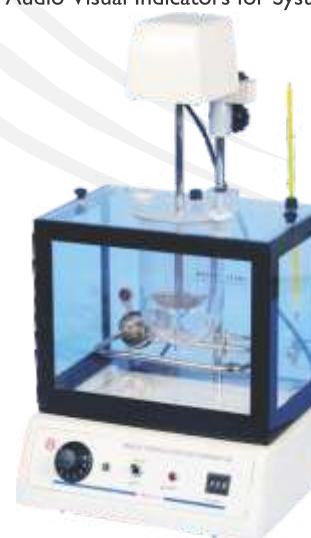
- REACTION VESSEL 1000 ml jar with stirrer pedal and basket
- HEATER 1 KW
- POWER 230 V±10% AC, 50 Hz
- DIMENSION 330 x 300 x 660 mm (Approx.)
- WEIGHT 11 Kg. (Approx.)



1912

### SALIENT FEATURES

- Complies with USP, IP specifications
- Extremely useful for pharmaceutical labs
- Highly Accurate and Easy to Operate
- Programmable Stirrer Control
- Continuation of last Sample Run in case of Power Failure
- 20 x 4 Line LCD with Backlit
- 20 Setups Storage Facility
- 200 Samples Storage Facility
- Printer Attachment Facility
- Audio Visual Indicators for System Status



912

## Tablet Dissolution Test Apparatus - 912

### TECHNICAL SPECIFICATIONS

- SPEED 25-200 RPM ± 1RPM
- RESOLUTION 1 RPM
- ACCURACY ± 1 RPM
- Depth Adjustment 25 mm to 40 mm
- TEMP. RANGE Ambient to 50C
- TEMP. ACCURACY ± 1C
- TEMP. CONTROL Thermostat 0-85C
- REACTION VESSEL 1000ml Jar with Stirrer Pedal and Basket
- HEATER 1 KW
- POWER 230±10%VAC, 50Hz.
- DIMENSIONS 330 x 300 x 660 mm (Approx.)
- WEIGHT 9 Kg. (Approx.)
- ACCESSORIES
  - \* Main unit with acrylic tank and rectangular cover plate
  - \* Reaction Vessel-Capacity 1000 ml
  - \* Round acrylic cover plate with hole and a large slit
  - \* Stirrer motor with tightening knob
  - \* S.S paddle, stirrer shaft with clamp, stainless steel wiremesh basket, glass thermometer, S.S support rod fitted with acrylic block
  - \* Instruction Manual



AN ISO 9001: 2008 CERTIFIED CO.





USP/IP Compliant

## µP Disintegration Test Apparatus -2901/ 1901



2901

### TECHNICAL SPECIFICATIONS

	2901	1901
➤ MODEL		
➤ DISPLAY	5 Digit LED Display for each of 2 Timers and 3 Digit LED for Temp.	20x4 Line Alphanumeric LCD display with Backlit
➤ KEYBOARD	10 soft touch membrane keys	15 soft touch membrane keys
➤ LED'S	3 LED's for Temperature, 2 LED's for Timer and Manual Mode and 1 LED for Set Function	3 LED's for Test status Run, Alarm, End and 1 LED for Heater On/Off Status
➤ NO. OF MOTORS	2 Motors (1 for each Basket)	1 Motor for both Baskets
➤ NO. OF TIMERS	2 Nos. (1 for each Basket)	1 No.
➤ SETUP DATA	----	10 different test setups
➤ PRINTER	----	Provision for the attachment of dot-matrix printer with parallel port interface available
➤ SPEED	30 ±1 Strokes per minute	
➤ STROKE HEIGHT	55±1 mm strokes / minute	
➤ RESOLUTION	1 Sec	
➤ RANGE	20°C(Ambient) to 40°C	
➤ ACCURACY	± 0.2 °C	
➤ TEMP. CONTROL	µP based using PT100/ Semiconductor sensor as per IP/USP	
➤ REACTION BEAKERS	1000 ml	
➤ HEATER	0.5 KW	
➤ POWER	230 V AC ± 10%, 50/60 Hz, 44VA	
➤ DIMENSION (LxBxH)	365x375x510 mm approx. (Model 2901)	370x365x495 mm approx. (Model 1901)
➤ WEIGHT	17 Kgs (Model 2901), 9Kg. (Model 1901)	

### ACCESSORIES :

Main Unit with Acrylic Tank and Rectangular Cover Plate, Reaction Vessel - Capacity 1000 ml - 2 Nos., Two USP Baskets with 6 Tubes and 6 guided Discs each, External Temperature Sensor, Mains Lead & Dust Cover, Instruction Manual

1901



901

## Digital Tablet Disintegration Apparatus - 901 & 904

### SALIENT FEATURES

- Digital time output with 1 second resolution
- Accurate time output provided by microprocessor based time totalizer
- Baskets move 'Up and Down' as per IP/USP test specifications
- Temperature controlled by sensitive thermostat

### TECHNICAL SPECIFICATIONS

➤ UP AND DOWN SPEED	30 RPM ±2 RPM
➤ ACCURACY	2%
➤ RESOLUTION	1 Sec.
➤ OPERATING TEMP. RANGE	0-50°C
➤ POWER	230 ± 10% VAC 50Hz.
➤ DIMENSIONS	320 x 300 x 450 mm
➤ WEIGHT	8 Kgs. (Approx.)
➤ ACCESSORIES	Double Jar : (901) and single Jar : (904), Dust Cover, Operation Manual
➤ DIMENSIONS	325x290x290 mm, 325x290x325 mm with rods



USP/IP Compliant

## Microprocessor Friability Apparatus - 1902/1903



1902

### SALIENT FEATURES

- Model 1902 - 2 Drums, Model 1903 - 1 Drum
- Complies with USP, IP specifications
- Microprocessor based, easy to use
- 20 x 4 line alphanumeric LCD display with backlit
- 16 Soft touch membrane type keys
- Independent programmable setups for Time & Count mode with storage
- Password-protected user access
- Facility to attach with weighing balance
- RS 232 Printer attachment facility
- Automatically calculates percentage friability
- Loading and unloading of tablets without removing drums
- Power Failure detection facility
- User friendly operation with menus & current status indicators.

### TECHNICAL SPECIFICATIONS

➤ TEST METHODS	Time and Count Mode
➤ SPEED OF DRUMS	20 – 60 RPM
➤ NO. OF DRUMS	Model 1902 - 2 Nos., Model 1903 - 1 No.
➤ DISPLAY	20 x 4 Alphanumeric LCD
➤ KEYBOARD	Soft touch membrane keys, alphanumeric mobile keypad
➤ COUNTER	1 to 9999 rotations
➤ TIMER	1 sec to 9 hrs 59 min 59 sec
➤ TYPE OF DRIVE	Direct Drive with Stepper Motor
➤ PRINTER	Attachment of RS232 printer with Serial interface
➤ ELECTRICAL SUPPLY	230 V AC ± 10%, 50/60 Hz, 44VA
➤ DIMENSIONS (WxHxD)	335mm X 330mm X 340mm
➤ WEIGHT	12 Kgs

## Digital Friability Test Apparatus - 902/903

902

### SALIENT FEATURES

- Sturdy motor to drive drums at constant speed
- Seven segment LED display
- Single & Dual Drum Drive

### TECHNICAL SPECIFICATIONS

➤ DISPLAY	3 digit seven segment bright red LED display
➤ ACCURACY	± 1 revolution
➤ RANGE	0-999 revolutions
➤ NO. OF DRUMS	Two (Model 902) One (Model 903)
➤ OPERATING TEMP. RANGE	10°-50°C
➤ POWER	230C± 10% VAC 50 Hz
➤ DIMENSIONS	430 x 220 x 225 mm (Model 902) 325 x 220 x 225 mm (Model 903)
➤ WEIGHT	10 Kg (Approx.)
➤ STANDARD ACCESSORIES	Drum : 2 Nos. (Model 902) : 1 No. (Model 903) Dust Cover : 1 No. Instruction Manual : 1 No.



New





USP/IP Compliant



1951

## Microprocessor Tap Density Tester - 1951

New

### SALIENT FEATURES

- Complies with USP, IP specifications
- Extremely useful for pharmaceutical labs
- Microprocessor based, easy to use
- 20 x 4 line alphanumeric LCD display with backlight
- 16 Soft touch membrane type keys
- Independent programmable setups for User & USP mode with storage
- RS 232 Printer attachment facility
- Automatically calculate result parameters like Tap Density, Initial Density, Compressibility Index and Hausner Ratio
- Automatically stores last Result
- Power Failure detection facility
- User friendly operation with menus & current status indicators.

### TECHNICAL SPECIFICATIONS

- TEST METHODS USP-I & USP-II
- NO. OF STATIONS 2
- DISPLAY 20 x 4 Alphanumeric LCD
- KEYBOARD 16 Soft touch membrane keys, alphanumeric mobile keypad
- TAP HEIGHT USP-I: 14mm± 2mm, USP-II: 3mm ± 0.3mm
- TAPS/MINUTE USP-I: 300± 15, USP-II: 250± 15
- NO. OF TAP COUNTS 1 to 9999
- TYPE OF DRIVE Direct Drive with Stepper Motor
- PRINTER Attachment of RS232 printer with Serial interface

### ACCESSORIES

- STANDARD ACCESSORIES Cylinders 100 & 250ml (1 each)
- ELECTRICAL SUPPLY Cylinder holders for 100 & 250ml (1 each)
- DIMENSIONS (W x H x D) 230V AC ± 10%, 50/60 Hz, 360x340x190 mm without holder
- WEIGHT 15 Kg. (Approx.),

## Bulk Density Apparatus - 951

951



### SALIENT FEATURES

- Extremely Useful for Pharmaceutical Labs
- Highly Accurate and Easy to Operate
- Microcontroller Based Digital Display
- 3 LED's for Status Indication
- Audible Alarm Sound
- Last Count Retention on Power Failure

### TECHNICAL SPECIFICATION

- DISPLAY 4 Digit seven Segment Bright Red LED
- MAXIMUM COUNTS 9999
- KEYBOARD 6 Soft Touch Membrane Keys
- CYLINDER 2 Nos. 50/100 ml Cylinders
- DROP HEIGHT 55 mm (Approx.)
- POWER 230 V 10% AC, 50 Hz
- DIMENSIONS 600 x 450 x 200 mm (Approx.) (L x B x H)
- WEIGHT 12 Kg. (Approx)
- ACCESSORIES 50 ml Cylinders - 2 Nos, Instruction Manual & Dust Cover

## Leak Test Apparatus - 1961/961



1961

### TECHNICAL SPECIFICATIONS

- VACUUM RANGE 150-600mm Hg
- VACUUM SETTING Vacuum can stabilize for a set value less than 400 mmHg ± 10mmHg within 30 Seconds
- DESICCATOR'S SIZE 6", 10" 12" (Please specify while ordering)
- DISPLAY 20x4 line alphanumeric LCD with backlight in model 1961  
4 Seven Segment Bright Red LED Display in model 961
- KEY BOARD Soft Touch Membrane Keys. Alphanumeric mobile keypad in Model 1961, Provision for attaching a PS2 Computer Keyboard is also available in model 1961
- PRINTER Attachment of DOT Matrix Printer with Cenronics/Parallel interface (Model 1961 only)
- SETUPS 5 Programmable user setups for quick analysis (model 1961only)
- HOLD TIME 15-999 Secs (in model 1961)  
Up to 9999 Secs (in model 961)
- POWER 230V ± 10% AC, 50 Hz
- WEIGHT 13 Kg. (Approx.)
- ACCESSORIES
  - Main Apparatus along with vacuum pump
  - Polycarbonate Desiccator along with connecting tube
  - Operating Manual

### SALIENT FEATURES

- Extremely Useful for Packing Industry
- Ideal for Leak Testing of Strips, Blisters & Sachets
- Microprocessor Based (Model 1961)
- Programmable Vacuum & Hold Time, Setups (Model 1961)
- Printer attachment Facility (in Model 1961 only)

## Auto Melting Point Apparatus - 1935 & 1934



1935

### TECHNICAL SPECIFICATIONS

- TEMPERATURE RANGE Ambient to 300°C
- TEMPERATURE ± 1°C at 20°C
- ACCURACY ± 2.5°C at 300°C
- TEMPERATURE SENSOR Platinum Resistance PT 100
- RAMP RATE Programmable at Scale of 1-10
- PLATEAU TEMPERATURE Programmable
- DISPLAY 4 Digit seven segment LED Display (Model 1935)  
3 Digit seven segment LED Display (Model 1934)
- DISPLAY RESOLUTION 0.1°C (Model -1935)  
1.0°C (Model - 1934)
- KEYBOARD Soft Touch Membrane Keys
- STATUS LED'S Plateau, °C, Ramp, Run, End, Ready & Recall
- MEMORY Storage up to 100 Results
- NUMBER OF SAMPLES 1 Sample at a time
- POWER AC 230V ± 10%, 50 Hz
- WEIGHT 9.0 Kg. (Approx)
- ACCESSORIES Box of Capillaries, Operation Manual & Dust Cover

### SALIENT FEATURES

- Easy to Operate
- Programmable Plateau Temperature
- Programmable Ramp Rates
- 4 Digit Seven Segment LED Display
- Storage up to 100 Results
- Quick cooling with integrated fan
- Audio Visual Indicators for System Status







## Digital Melting Point Apparatus - 2935/935/934

2935



### TECHNICAL SPECIFICATIONS

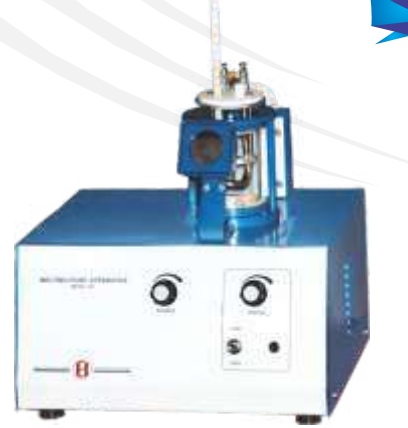
- TFT SCREEN Available with high resolution camera for viewing capillaries (only in Model 2935)
- DISPLAY 4 Digit Seven Segment LED display (Model - 2935)  
4 Digit Seven Segment LED display (Model - 935)  
3 Digit Seven Segment LED display (Model - 934)
- TEMPERATURE 0-300 °C
- RESOLUTION 0.1°C (Model -2935 & Model - 935)  
1°C (Model -934)
- CAPILLARY GLASS TUBE 100mm long, 0.8 to 1.1mm internal diameter
- BOILING POINT 6x75mm Glass Tube
- SAMPLE SIZE Fine powder properly dried at a temperature considerably below its melting point, 4 to 6 mm high

935



- OIL-BATH Silicon oil bath beaker - 200 ml capacity with teflon cover fitted with oil immersion heater. It is having three holes for holding the capillaries, one for boiling point tube and one for thermometer Controllable with front knob
- STIRRER SPEED 230V ± 10% AC, 50 Hz
- POWER 370 x 290 x 290mm (Model - 2935)  
315 x 290 x 290mm (Model - 935 & Model 934)
- DIMENSION(LxBxH) 12 Kg. (Approx.)
- WEIGHT
- ACCESSORIES
  - Box of Capillaries
  - Glass Tubes for Liquid Sample (6 x 75 mm) - 2 Nos.
  - Magnetic Capsule
  - Bottle of Silicon Oil - 250 ml
  - Glass Cylindrical Beaker with Teflon cover fitted with immersion heater
  - Instruction Manual, Dust Cover

931



## Melting Point Apparatus - 931

### TECHNICAL SPECIFICATIONS

- STIRRER SPEED Controllable with front knob
- TEMPERATURE 0 - 300 °C
- CAPILLARY GLASS TUBE 100mm long, 0.8 to 1.1mm internal diameter
- SAMPLE SIZE Fine powder properly dried at a temperature considerably below its melting point, 4 to 6 mm high
- OIL-BATH Silicon oil bath beaker - 200 ml capacity with teflon cover fitted with oil immersion heater. It is having three holes for holding the capillaries, one for boiling point tube and one for thermometer
- POWER 230 ± 10% VAC, 50 Hz
- DIMENSION 315 x 290 x 290 mm (L x B x H) (Approx.)
- WEIGHT 12 Kg. (Approx.)
- ACCESSORIES
  - Box of Capillaries
  - Boiling Point Tubes - 2 Nos.
  - Thermometer with range 0 - 360 °C
  - Magnetic Capsule
  - Bottle of Silicon Oil
  - Glass Cylindrical Beaker with Teflon cover fitted with immersion heater



## Flocculator/Jar Test Apparatus with 6 paddles - 1926

1926



### SALIENT FEATURES

- Accepts six samples
- Digital indication of speed and time
- Two pre-set programs
- Built-in illumination for easy viewing of samples



### TECHNICAL SPECIFICATIONS

- NO. OF JAR 6
- SPEED RANGE 25 to 200 RPM
- PRE-SET PROGRAMS 2
- TIMER 1 to 99 minutes
- CONTROLS KEYPAD Touch Sensitive
- DIGITAL DISPLAY LED
- POWER 230V, 50Hz, 100W
- DIMENSION (LxBxH) 870 x 265 x 500 mm (Approx.)

1924



## Flocculator/Jar Test Apparatus with 4 paddles - 1924

### SALIENT FEATURES

- Accepts four samples
- Digital indication of speed and time
- Two pre-set programs
- Built-in illumination for easy viewing of samples



### TECHNICAL SPECIFICATIONS

- NO. OF JAR 4
- SPEED RANGE 25 to 200 RPM
- PRE-SET PROGRAMS 2
- TIMER 1 to 99 minutes
- CONTROLS KEYPAD Touch Sensitive
- DIGITAL DISPLAY LED
- POWER 230V, 50Hz, 100W
- DIMENSION (LxBxH) 590 x 265 x 500 mm (Approx.)

1922



## Flocculator/Jar Test Apparatus with 2 paddles - 1922

### SALIENT FEATURES

- Accepts two samples
- Digital indication of speed and time
- Two pre-set programs
- Built in illumination for easy viewing of samples



### TECHNICAL SPECIFICATIONS

- NO. OF JAR 2
- SPEED RANGE 25 to 200 RPM
- PRE-SET PROGRAMS 2
- TIMER 1 to 99 minutes
- CONTROLS KEYPAD Touch sensitive
- DIGITAL DISPLAY LED
- POWER 230V, 50Hz, 100W
- DIMENSION (LxBxH) 310 x 265 x 500 mm (Approx.)







USP/EP Compliant

## Tablet Hardness Tester (4 Parameter) - 3958

### SALIENT FEATURES

- USP Pharmacopeia and EP Compliant
- Multi-Parameter Measurements
- LCD Display
- Small Footprint
- 'Optional' built in printer
- Sample throughput
- 'Adjustment free' testing jaws
- Over-range alert

New

3958

### TECHNICAL SPECIFICATIONS

- DISPLAY Graphic LCD(240 x 128 pixels)
- KEYBOARD Alpha-Numeric Function Keys
- HARDNESS RANGE 5-500N (800N Option Available)
- HARDNESS ACCURACY > 1N
- DIAMETER AND THICKNESS RANGE 0.5 – 35 mm
- DIAMETER ACCURACY > ± 0.05 mm
- MEASURING UNITS Thickness and Diameter in either mm or Inches  
Hardness Measurement in:  
•N(Newton)  
•KP (Kilo Pound, 1KP = 9.81N)  
•Sc (Strong Cobb, 1KP = 1.43Sc)  
Yes (1/10 or 1/100 Settable)  
(Programmable Tolerances T1, T2, and plausibility)  
Constant (Linear) Force or Constant (Linear) Speed  
Up to 100  
Up to 10  
Requires 10mm Reference Block and 10kg Reference Weight(Certified)  
No Tilt (User Friendly)  
10mm Certified Block (For Thickness and Diameter  
3-Point Linear Calibration with Certified Weight (5, 10 and 15kg)  
Yes (Check the Load Cell Signal Falls Within Range Before making any further Calibration)  
Yes  
Yes (Text Format)  
Yes  
Yes (For Advance Settings)  
Yes  
Yes  
Yes  
Yes  
Yes  
USB Type A (2), USB Type B, LAN, RS-232 (Serial Port for Balance Connection), Parallel Printer and 40 Column Thermal / Mini Dot Matrix Printer
- DIMENSIONS 22.4" (w) x 14.6"(h) x 14.2"(d) / (57 cm x 37 cm x 36 cm)
- WEIGHT Without Printer: 15.4 lbs. / (7 kg)  
With Printer: 17.6lbs./ (8 kg)
- ELECTRICAL POWER 230V ± 23V, 50/60 Hz or 115V ± 15V, 50/60 Hz



USP/EP Compliant

## Tablet Hardness Tester (3 Parameter) - 3957

### SALIENT FEATURES

- USP Pharmacopeia and EP Compliant
- Multi-Parameter Measurements
- LED Display
- Small Footprint
- 'Optional' built in printer
- Sample throughput
- 'Adjustment free' testing jaws
- Over-range alert

New

3957

### TECHNICAL SPECIFICATIONS

- DISPLAY LED
- KEYBOARD User Friendly 9 Keys operations
- HARDNESS RANGE 5-500N (800N Option Available)
- HARDNESS ACCURACY > 1N
- DIAMETER & THICKNESS RANGE 1.5 – 35 mm
- DIAMETER ACCURACY > ± 0.05mm
- MEASURING UNITS Thickness and Diameter in either mm or Inches  
Hardness Measurement in:  
• N(Newton)  
• Measurable Units KP (Kilo Pound, 1KP = 9.81N)  
• Sc (Strong Cobb, 1KP = 1.43Sc)  
Constant (Linear) Force or Constant (Linear) Speed  
Up to 99  
Last test result  
Requires 10mm Reference Block and 10kg Reference Weight(Certified)  
No Tilt (User Friendly)  
10mm Certified Block (For Thickness and Diameter  
3-Point Linear Calibration with Certified Weight (5, 10, and 15kg)  
Yes (Check the Load Cell Signal Falls Within Range Before making any Further Calibration)  
Yes  
Yes (Text Format)  
Yes  
Yes (For Advance Settings)  
Yes  
Yes  
Yes  
Yes  
RS-232(Serial Port for Service Use Only) and Parallel Printer, 40 Column Thermal / Mini Dot Matrix Printer  
22.4" (w) x 14.6"(h) x 14.2"(d) / (57 cm x 37 cm x 36 cm)  
Without Printer: 15.4 lbs. / (7 kg)  
With Printer: 17.6lbs./ (8 kg)
- DIMENSIONS 22.4" (w) x 14.6"(h) x 14.2"(d) / (57 cm x 37 cm x 36 cm)
- WEIGHT Without Printer: 15.4 lbs. / (7 kg)  
With Printer: 17.6lbs./ (8 kg)
- ELECTRICAL POWER 230V ± 23V, 50/60 Hz or 115V ± 15V, 50/60 Hz







3956

#### SALIENT FEATURES

- Compatibility
- Real Time Data Transfer
- Unit Selection & Conversion
- Parameter Measurements
- Sequence Indicators
- LCD with backlit display
- Results Storage

### Portable Tablet Hardness Tester - 3956

#### TECHNICAL SPECIFICATIONS

- |   |   |
|---|---|
| ➤ DISPLAY                               | LCD with backlit display                                    |
| ➤ KEYBOARD                              | User Friendly 9 Keys operations                             |
| ➤ HARDNESS RANGE                        | 5-500N  |
| ➤ HARDNESS ACCURACY                     | ± 0.05% FS  |
| ➤ MEASURING UNITS                       | N (Newton), KGF (Kilogram Force) and Lbf (Low bound Force)  |
| ➤ INTERFACE PORTS                       | RS-232  |
| ➤ DIMENSIONS                            | 360 x 65 x 100 mm   |
| ➤ ELECTRICAL POWER ADAPTER              | 230 V, 50Hz to DC 12V, 300 mA                               |
| ➤ BATTERY                               | 1200 mAh, 8.4V, Ni-Hi Rechargeable Battery                  |
| ➤ PEAK FORCE MEASUREMENT                | Yes   |
| ➤ ACRYLIC SAFETY GLASS COVER            | Yes   |
| ➤ STORED RESULTS                        | Up to 10 (also calculate the average value of test results) |
| ➤ ZERO POINT ADJUSTMENT FOR CALIBRATION | Yes   |
| ➤ AUTO UNIT CONVERSION                  | Yes   |
| ➤ PROGRAMMABLE T1, T2 TOLERANCE         | Yes   |
| ➤ TABLET SIZE                           | 2mm to 28 mm  |

New



461

#### SALIENT FEATURES

- Extremely useful for pharmaceutical Labs
- High accurate and easy to operate
- 3½ Digit Display
- 6 Temperature Probes
- Used for Pyrogen Testing

### Digital Tele Thermometer - 461

#### TECHNICAL SPECIFICATIONS

- |                 |   |
|-----------------|---|
| ➤ RANGE         | 0 to 60° C  |
| ➤ RESOLUTION    | 0.1° C  |
| ➤ ACCURACY      | 0.2% FS ± 1 Digit   |
| ➤ INPUT         | RTD (PT-100) or IC Sensor                                       |
| ➤ CHANNELS      | 6 channels, switch selectable                                   |
| ➤ REPEATABILITY | ±0.2° C   |
| ➤ DISPLAY       | 3½ Digit Seven Segment bright red LED                           |
| ➤ POWER SUPPLY  | 230V 10% AC, 50 Hz  |
| ➤ DIMENSIONS    | 275 x 175 x 76 mm   |
| ➤ WEIGHT        | 2.5 Kg (Approx.)  |
| ➤ ACCESSORIES   | Pyrogen Probes (Set of 6 Probes), Operation Manual. Dust Cover. |

### pH/Ion Meter - 1016

#### TECHNICAL SPECIFICATIONS

- |  |   |
|--|---|
| <b>pH</b>                                      |   |
| ➤ RANGE  | -2 to 20.000 pH   |
| ➤ RESOLUTION                                   | 0.001 / 0.01 pH (user-selectable)   |
| ➤ ACCURACY                                     | ± 0.002 / ±0.01 pH  |
| ➤ CALIBRATION                                  | 1 to 5 points (standard buffers)  |
| ➤ pH BUFFER SET OPTIONS                        | USA : pH 1.68, 4.01, 7.00, 10.01, 12.45<br>NIST: pH 1.68, 4.01, 6.86, 9.18, 12.45<br>Buf-1: pH 1.68, 4.01, 6.86, 10.01, 12.45<br>Buf-2: pH 1.68, 4.01, 7.00, 9.18, 12.45<br>Custom: User Defined Buffer Calibration |
| ➤ RELATIVE STABILITY                           | ± 0.002 pH/Hour   |
| ➤ TEMPERATURE COMPENSATION                     | -5 to 105° C  |
| <b>mV/ RELATIVE mV</b>                         |   |
| ➤ RANGE  | - 1999.9 to +1999.9 mV  |
| ➤ RESOLUTION                                   | 0.1 mV  |
| ➤ ACCURACY                                     | ± 0.2 mV  |
| ➤ CALIBRATION                                  | mV offset up to ± 150 mV  |
| <b>TEMPERATURE</b>                             |   |
| ➤ RANGE  | -5.0 to 105.0 °C; 23.0 to 221.0°F   |
| ➤ RESOLUTION                                   | 0.1°C / 0.1°F   |
| ➤ ACCURACY                                     | ± 0.3 °C / 0.5°F  |
| ➤ CALIBRATION                                  | Automatic Temperature Compensation offset ±5.0°C/ ±9.0°F  |
| ➤ SENSOR                                       | Semiconductor Type  |
| <b>ION CONCENTRATION</b>                       |   |
| ➤ RANGE  | 0.001 to 19999  |
| ➤ RESOLUTION (HIGH RESOLUTION MODE: ±500.0 mV) | 0.001 : from 0.001 to 0.999,<br>0.01 : from 1.00 to 9.99<br>0.1 : from 10.0 to 99.9, 1 : from 100 to 19999  |
| ➤ RESOLUTION (LOW RESOLUTION MODE: ±1850.0 mV) | 0.001 : from 0.001 to 0.099, 0.01: from 0.10 to 0.99<br>0.1 : from 1.0 to 9.9, 1 : from 10 to 19999   |
| ➤ ACCURACY                                     | ± 0.5% of full scale for monovalent ions  |
| ➤ CALIBRATION                                  | 1% of full scale for divalent ions, 2 to 5 points   |
| ➤ MIN / MAX AVERAGE SLOPE                      | 10 mV/decade / 75mV/ decade   |

New



1016

#### SALIENT FEATURES

- Measures Ion, pH, mV & Temperature
- 20 x 4 line Alphanumeric LCD with backlit
- 20 keys, Soft Touch Membrane Type
- Storage up to 999 Samples
- Attachment for Centronics Dot Matrix Printer
- PS2 keyboard connectivity
- Password protection for calibration
- Printer Attachment Facility
- Calibration due & Measurement alarms
- User friendly & reliable
- Up to 5 point of Calibration with Auto Buffer Recognition
- Automatic error detection facility
- High accuracy & Auto Temperature Compensation

### Digital Photo Fluorometer - 681

#### TECHNICAL SPECIFICATIONS

- |                      |  |
|----------------------|--|
| ➤ FLUORO SENSITIVITY | Full scale deflection obtained with 1 ppm quinine sulphate In 0.1 N sulphuric acid (primary wavelength 360 nm) |
| ➤ DISPLAY            | 3 digit 7 segment Red LED  |
| ➤ EXCITATION SOURCE  | 12V, 50 W Tungsten Halogen lamp  |
| ➤ SENSITIVITY RANGE  | Adjustable in 4 ranges   |
| ➤ PRIMARY FILTERS    | Corning 5840 and Corning 5113 mounted on holders   |
| ➤ SECONDARY FILTERS  | Corning 4308, Corning 3486 and Corning 3385 mounted on holders   |
| ➤ DETECTOR           | Highly sensitive wide range Photodiode / Photocell   |
| ➤ SAMPLE TEST TUBES  | 15 mm (D) x 80 mm (H)  |
| ➤ MINIMUM SAMPLE     | 4 ml   |
| ➤ POWER              | 230 V ± 10% AC, 50 Hz.   |
| ➤ WEIGHT             | 4.5 Kg (approximately)   |
| ➤ DIMENSIONS         | 260 x 335 x 160mm (LxBxH)  |

#### ACCESSORIES

- |                                 |            |
|---------------------------------|------------|
| ➤ TEST TUBES                    | A Set of 5 |
| ➤ DUST COVER                    | 1 No.      |
| ➤ INSTRUCTION MANUAL            | 1 No.      |
| ➤ PRIMARY AND SECONDARY FILTERS | A Set of 5 |

#### SALIENT FEATURES

- 3 Digit Seven Segment LED Display
- Covers Entire Visible Range
- Determines the Concentration of Fluorophores & Quinine

681



AN ISO 9001 : 2008 CERTIFIED CO.



AN ISO 9001 : 2008 CERTIFIED CO.





## Microprocessor pH Meter - 1015 (5 Point Calibration)

1015

### SALIENT FEATURES

- Measures pH, mV and Temperature
- 5 Point Calibration
- 128 x 64 dots Graphical LCD Display
- Auto Buffer Recognition Facility
- Storage up to 1000 Samples
- Attachment for Serial Dot Matrix / Thermal Printer

### TECHNICAL SPECIFICATIONS

pH	
➤ RANGE	-2.000 to 20.000 pH
➤ RESOLUTION	Selectable 0.1, 0.01, 0.001 pH
➤ ACCURACY	± 0.002 pH ± 1 digit
➤ READ OUT	128 x 64 dots Graphical LCD Display
➤ CALIBRATION	Auto & Manual with 5-Point Calibration
➤ AUTO BUFFER RECOGNITION	1.680, 4.000, 7.000, 9.200 & 12.450 pH or User Defined
➤ RELATIVE STABILITY	± 0.002 pH/Hour
➤ TEMP. COMPENSATION	-5 to 110 °C Auto/Manual
mV	
➤ RANGE	0 to ± 1999.9 mV
➤ RESOLUTION	0.1 mV
➤ ACCURACY	± 0.1 mV ± 1 digit
TEMPERATURE	
➤ RANGE	-5 to 110 °C
➤ RESOLUTION	0.1 °C
➤ ACCURACY	± 0.1 °C
➤ SENSOR	Semi Conductor Type
➤ POWER SUPPLY	12V DC using 230V±10% AC Adaptor
➤ PRINTER INTERFACE	External Serial RS232 Dot Matrix Printer Interface
➤ ACCESSORIES	Combination pH Electrode, Temperature Probe, Buffer Tablets 4 pH & 7pH, Electrode Stand, Mains Lead, Instruction Manual, Dust Cover



New

## Microprocessor pH Meter - 1013

1013

### TECHNICAL SPECIFICATIONS

PARAMETER	pH	mV	Temp°C
➤ RANGE	-2 to 20.000 pH	0 to 1999.9 mV	0 to 100°C
➤ RESOLUTION	0.001pH	0.1 mV	0.1°C
➤ ACCURACY	±0.001 pH ±1 digit	±0.1mV	±0.1°C
➤ TEMP. COMPENSATION	-5 to 110 °C		
➤ CALIBRATION	Auto/Manual		
➤ AUTO BUFFER RECOGNITION	4.00, 7.00 & 9.20 pH		
➤ READ OUT	128 x 64 dots Graphical LCD Display		
➤ STORAGE	Up to 1000 Samples		
➤ PRINTER ATTACHMENT	External Serial RS232 Dot Matrix Printer Interface		
➤ KEY BOARD	8 Keys Soft Touch Membrane Type		
➤ POWER	12V DC using 230±10% AC Adaptor		
➤ WEIGHT	0.8 Kg. (Approx.)		



## Microprocessor Based pH System - 1012

1012

### TECHNICAL SPECIFICATIONS

PARAMETER	pH	mV	Temp°C
➤ RANGE	-2.00 to 20.00pH	0 to 1999.9mV	0 to 100°C
➤ RESOLUTION	0.01pH	0.1mV	0.1°C
➤ ACCURACY	±0.01 pH ±1 digit	±0.1mV	±0.1°C
➤ TEMP. COMPENSATION	-5 to 110°C (Auto/Manual)		
➤ CALIBRATION	Auto/Manual		
➤ AUTO BUFFER RECOGNITION	4.00 , 7.00 & 9.20 pH		
➤ READ OUT	128 x 64 dots Graphical LCD Display		
➤ ELECTRODE SLOPE	80% to 120%		
➤ STORAGE	Up to 1000 Sample		
➤ PRINTER ATTACHMENT	Through RS 232 for serial printer using 80 column Dot Matrix / Thermal Printer		
➤ KEY BOARD	8 Keys Soft Touch Membrane Type		
➤ POWER	12V DC using 230V ± 10% AC Adaptor		
➤ WEIGHT	0.8 Kg. (Approx.)		



### SALIENT FEATURES

- 128 x 64 dots Graphical LCD Display
- Measures pH, mV & Temperature
- Auto Buffer Recognition Facility
- Storage for 1000 Samples
- Attachment for Serial Dot Matrix/ Thermal Printer

## Microprocessor Based pH Meter - 1010

1010

### TECHNICAL SPECIFICATIONS

GENERAL	
➤ PARAMETERS	pH, mV and Temperature
➤ DISPLAY	7-Segment bright Red LED display (3 for Temperature and 4 for pH/mV)
➤ KEY BOARD	6 keys, soft touch membrane type
➤ POWER SUPPLY	12V DC, using 230V±10% AC Adapter
pH	
➤ RANGE	-2.00 to 20.00 pH
➤ RESOLUTION	0.01 pH
➤ RELATIVE STABILITY	0.02 pH/Hour
➤ ACCURACY	± 0.001 pH ± 1 Digit
➤ TEMP. COMPENSATION	-5 to 110°C
➤ CALIBRATION	Auto (2 or 3 point)
➤ AUTO BUFFER RECOGNITION	4.00, 7.00 & 9.20 pH
➤ ELECTRODE SLOPE	80% to 120%
mV	
➤ RANGE	0 to ± 1999 mV
➤ RESOLUTION	1 mV
➤ ACCURACY	± 1 mV ± 1 digit
TEMPERATURE	
➤ RANGE	-5 to 110 °C
➤ RESOLUTION	0.1°C
➤ ACCURACY	± 0.1°C
➤ SENSOR	Semi-conductor Type
➤ DIMENSIONS	270 x 202 x 80mm (LxBxH)
➤ WEIGHT	0.8 Kg. (Approx.)

### STANDARD ACCESSORIES - 1010

- Combined pH Electrode 1 No.
- Temperature Probe 1 No.
- Dust Cover 1 No.
- Instruction Manual 1 No.
- Electrode Stand 1 No.
- Buffer Tablets 4 & 7 pH 2 Nos. each
- Main Lead 1 No.







122

## Digital Potentiometer - Model 122 (with inbuilt stirrer and two burettes option)

New

### SALIENT FEATURES

- 3½ Digit LED Display
- Soft Touch Keys
- Built-in Stirrer
- Internal Standard Facility
- 2 Burette Assemblies (Optional)
- Rugged & Economical
- Highly Stable & Accurate

### TECHNICAL SPECIFICATIONS

- READOUT 3½ digit bright red LED display
- KEY BOARD 3 soft touch keys
- RANGE 0 to ± 1999 mV
- RESOLUTION 1 mV
- ACCURACY ± 1 mV ± 1 digit
- INTERNAL STANDARD Available
- OPERATING TEMPERATURE 10°C to 50°C
- BURETTE ASSEMBLY OPTION Available for 2 Burettes
- INBUILT STIRRER Available at fixed RPM
- POWER SUPPLY 230V ± 10%AC, 50 Hz
- DIMENSIONS 410 x 248 x 101 mm (LxBxH)
- WEIGHT 2.5 Kg

### Standard Accessories

Platinum Electrode - 1 No., Reference Electrode - 1 No., Dust Cover - 1 No., Electrode Stand - 1 No., Magnetic Capsule - 1 No., Titration Beaker - 1 No., Instruction Manual - 1 No.

### Optional Accessories

Silver Electrodes, Glass Electrode, Complete Burette Assembly



121

## Digital Potentiometer - Model 121 (with inbuilt stirrer and one burettes option)

New

### SALIENT FEATURES

- 3½ Digit LED Display
- Soft Touch Keys
- Built-in Stirrer
- Internal Standard Facility
- Burette Assembly (Optional)
- Rugged & Economical
- Highly Stable & Accurate

### TECHNICAL SPECIFICATIONS

- READOUT 3½ digit bright red LED display
- KEY BOARD 3 soft touch keys
- RANGE 0 to ± 1999 mV
- RESOLUTION 1 mV
- ACCURACY ± 1 mV ± 1 digit
- INTERNAL STANDARD Available
- OPERATING TEMPERATURE 10°C to 50°C
- BURETTE ASSEMBLY OPTION Available for 1 Burette
- INBUILT STIRRER Available at fixed RPM
- POWER SUPPLY 230V ± 10%AC, 50 Hz
- DIMENSIONS 278 x 248 x 101 mm (LxBxH)
- WEIGHT 2.5 Kg



120

## Digital Potentiometer - Model 120 (with inbuilt stirrer)(Imported)

New

### SALIENT FEATURES

- 3½ Digit LED Display
- Soft Touch Keys
- Built-in Stirrer
- Internal Standard Facility
- Rugged & Economical
- Highly Stable & Accurate

### TECHNICAL SPECIFICATIONS

- READOUT 3½ digit bright red LED display
- KEY BOARD 3 soft touch keys
- RANGE 0 to ± 1999 mV
- RESOLUTION 1 mV
- ACCURACY ± 1 mV ± 1 digit
- INTERNAL STANDARD Available
- OPERATING TEMPERATURE 10°C to 50°C
- INBUILT STIRRER Available at fixed RPM
- POWER SUPPLY 230V ± 10%AC, 50 Hz
- DIMENSIONS 270 x 248 x 101 mm (LxBxH)
- WEIGHT 2.5 Kg

### Standard Accessories

Platinum Electrode - 1 No., Reference Electrode - 1 No., Dust Cover - 1 No., Electrode Stand - 1 No., Magnetic Capsule - 1 No., Titration Beaker - 1 No., Instruction Manual - 1 No.

### Optional Accessories

Silver Electrode, Glass Electrode



118

## Digital Potentiometer - 118 / 119

### SALIENT FEATURE

- Highly Stable & Accurate
- 4 Electrodes for Different Titration (Model 118)
- 2 Electrodes for Different Titration (Model 119)
- 3½ Digit LED Display
- Rugged & Economical

### TECHNICAL SPECIFICATIONS

- RANGE 0 to ± 199.9mV  
0 to ± 1999mV
- RESOLUTION 0.1mV
- ACCURACY ± 1mV
- INPUT IMPEDANCE > 10<sup>12</sup> Ohms
- OPERATING TEMPERATURE 10°C to 45°C
- DISPLAY 3½ Digit 0.5" seven segment LED display with auto polarity indication
- POWER 230V ± 10% AC, 50 Hz.
- DIMENSIONS 275 x 190 x 78mm
- WEIGHT 2.5 Kg. (Approx.)
- STANDARD ACCESSORIES  
Platinum Electrode: 1 No. (with 118 & 119)  
Reference : 1 No. (with 118 & 119)  
Glass Electrode : 1 No. (only with 118 )  
Silver Electrode : 1 No. (only with 118 )  
Dust Cover : 1 No.  
Electrode Stand : 1 No.







## Digital pH Meter - 101 & 111

101



### SALIENT FEATURES

- Measures pH & mV
- Highly Accurate using Micro-controller
- Auto Temperature Compensation Facility (Model 101 only)
- Auto Buffer Recognition
- One Touch Calibration
- Soft Touch Keys
- Up to 3 point Calibration

### TECHNICAL SPECIFICATIONS

PARAMETER	pH	mV	TEMP.
➤ RANGE	-2.00 to 20.00 pH	0 to ±1999 mV	-5 to 110°C (101 only)
➤ RESOLUTION	0.01 pH	1mV	0.1 °C (101 only)
➤ ACCURACY	± 0.01 pH	± 1 mV	± 0.1°C ± 1 digit (101 only)
➤ DISPLAY	3½ Digit LED		
➤ TEMP. COMPENSATION	Auto/Manual: 0 to 100 °C (Model - 101), Manual: 0 to 100°C (Model - 111)		
➤ INPUT IMPEDANCE	> 10 <sup>12</sup> ohms		
➤ SLOPE CONTROL	80 to 120%		
➤ SENSOR	Combined pH Electrode, Temperature Probe (Model - 101) Combined pH Electrode (Model - 111)		
➤ POWER	12V DC using 230 ± 10% AC Adapter		
➤ DIMENSIONS	270 x 202 x 80 mm (L x B x H)		
➤ WEIGHT	0.8 Kg approx.		

New

### ACCESSORIES

- Combination pH Electrode
- Buffer Tablets 4 pH & 7 pH
- Operation Manual
- Buffer Bottles (4 & 7 pH)
- Temp. Probe (101)
- Dust Cover
- Electrode Stand

## Digital pH Meter - alpha 01

alpha 01



### TECHNICAL SPECIFICATIONS

PARAMETER	pH	mV
➤ RANGE	0 to 14.00 pH	0 to ±1999 mV
➤ RESOLUTION	0.01pH	1 mV
➤ ACCURACY	± 0.01 pH	± 1 mV
➤ DISPLAY	3½ Digit LED	
➤ TEMP. COMPENSATION	Manual : 0 to 100 °C	
➤ INPUT IMPEDANCE	> 10 <sup>12</sup> ohms	
➤ SLOPE CONTROL	80 to 120%	
➤ RECORDER OUTPUT	0 to 10 mV/pH Adjustable 0 to 10 mV/100 mV Adjustable	
➤ POWER	230 V ± 10% AC, 50Hz	
➤ DIMENSIONS	275 x 175 x 76 mm (L x B x H)	
➤ SENSOR	Combined pH Electrode	
➤ ACCESSORIES	<ul style="list-style-type: none"> <li>* Combination pH Electrode</li> <li>* Buffer Tablets 4 pH &amp; 7 pH</li> <li>* Operation Manual</li> <li>* Buffer Bottles (4 pH &amp; 7 pH)</li> <li>* Dust Cover</li> <li>* Electrode Stand</li> </ul>	

New

### SALIENT FEATURES

- Measures pH & mV
- Highly Stable and Accurate
- 3½ Digit Display
- Auto Polarity & Decimal Indication

1615



## µP Based pH-EC-TDS Meter - 1615

### TECHNICAL SPECIFICATIONS

PARAMETER	pH	EC	TDS	TEMP.
➤ RANGE SEL.	----	Automatic	Automatic	----
➤ RANGE	-2.00 to 20.00pH	0-20, 0-200 µS 0-2, 0-20, 0-200 mS	0-20, 0-200 ppm 0-2, 0-20, 0-200ppt	-5 to 110°C
➤ ACCURACY	0.01pH ± 1 Digit	± 0.5% FS ± 1 Digit	± 0.5%FS ± 1 Digit	± 0.1 °C
➤ RESOLUTION	0.01pH	0.01µS	0.01 ppm	0.1 °C
➤ CELL CONST	----	Adjustable (0.05-10.5)	Adjustable (0.05-10.5)	----
➤ TEMP. COMP.	Auto/Manual (0-100 °C)	Auto/Manual 0-50°C	Auto/Manual 0-50°C	----
➤ TEMP. COEFF.	----	Adjustable (0.1- 4.0%)	Adjustable (0.1- 4.0%)	----
➤ AUTO BUFFER	4.00, 7.00, 9.20pH	----	----	----
➤ READOUT	128 x 64 dots Graphical LCD Display			
➤ KEY BOARD	8 Soft touch membrane type keys			
➤ PRINTER	RS 232 for serial printer using 80 column Dot Matrix/Thermal Printer			
➤ STORAGE	up to 1000 Samples			
➤ POWER	12V DC using 230V ± 10% AC Adaptor			
➤ DIMENSIONS	270 x 202 x 80 mm (LxBxH)			
➤ WEIGHT	0.8 Kg (Approx)			

### SALIENT FEATURES

- 128 x 64 dots Graphical LCD Display
- pH, EC, TDS & Temp. Measurements
- Auto Temperature Compensation
- Auto Buffer Recognition in pH Mode
- Auto Ranging Facility in EC/TDS Modes
- Programmable Ref. Temp & Temp. Coefficients in EC Mode
- 1000 Samples Storage Facility
- Attachment for Serial Dot Matrix/ Thermal Printer

### ACCESSORIES

- \* pH Combination Electrode,
- \* Electrode Stand, Dust Cover,
- \* Instruction Manual, Mains Lead
- \* pH Buffer tablets (4.00 & 7.00 pH)
- \* Conductivity/TDS Cell, Temp. Probe,

## Microprocessor Based pH-EC Meter - 1611

### TECHNICAL SPECIFICATIONS

PARAMETER	pH	EC	TEMP.
➤ RANGE SEL.	----	Automatic	----
➤ RANGE	-2 to 20pH	0-20, 0-200µS 0-2, 0-20, 0-200 mS	-5 to 110°C
➤ ACCURACY	0.01pH ± 1 Digit	± 0.5% FS	± 1 Digit ± 0.1 °C
➤ RESOLUTION	0.01pH 0.01 µS	0.1 °C	
➤ CELL CONST.	----	Adjustable (0.05-10.5)	----
➤ TEMP. COMP	Auto/Manual (0-100 °C)	Auto/Manual (0-100°C)	----
➤ TEMP. COEFF	----	Adjustable(0.1- 4.0%)	----
➤ AUTO BUFFER	4.00, 7.00, 9.20 pH	----	----
➤ READOUT	128 x 64 dots Graphical LCD Display		
➤ STORAGE	up to 1000 Samples		
➤ KEY BOARD	8 Soft touch membrane type keys		
➤ PRINTER	Through RS 232 for serial printer using 80 column Dot Matrix Printer		
➤ POWER	12V DC using 230V ± 10% AC Adaptor		
➤ DIMENSIONS	270 x 202 x 80mm (LxBxH)		
➤ WEIGHT	0.8 Kg (Approx.)		

1611



AN ISO 9001 : 2008 CERTIFIED CO.





1602

## µP Based EC-TDS-Sal Meter - 1602

### TECHNICAL SPECIFICATIONS

PARAMETER	EC	TDS	SALINITY	TEMP.
➤ RANGE SEL.	Automatic	Automatic	Automatic	---
➤ RANGE	0-20, 0-200µS	0-2, 0-20, 0-200ppm	0-20, 0-200ppm	0-100°C
➤ ACCURACY	± 0.5%FS±1Digit	±0.5%FS±1Digit	±1% FS± 1Digit	± 0.1°C
➤ RESOLUTION	0.01 µS	0.01 ppm	0.01 ppm	0.1°C
➤ CELL CONST	Adjustable (0.05-10.5)	Adjustable (0.05-10.5)	Adjustable (0.05-10.5)	---
➤ TEMP. COMP	Auto/Manual 0-50°C	Auto/Manual 0-50°C	Auto/Manual 0-50°C	---
➤ TEMP. COEFF.	Adjustable (0.1 - 4.0%)	Adjustable (0.1 - 4.0%)	Adjustable (0.1 - 4.0%)	---
➤ READOUT	128x64 dots Graphical LCD Display			
➤ KEY BOARD	8 Soft touch membrane type keys			
➤ PRINTER	RS232 for serial printer using 80 column dot matrix printer			
➤ STORAGE	Up to 1000 Samples			
➤ POWER	12V DC using 230V ± 10% AC Adaptor			
➤ ACCESSORIES	Cond./TDS/Salinity Cell, Temperature Probe, Electrode Stand, Mains Lead, Dust Cover, Instruction Manual			

### SALIENT FEATURES

- 128x64 dots Graphical LCD Display
- EC, TDS, Salinity & Temperature Measurements
- Auto Temperature Compensation
- Auto Ranging Facility
- Programmable Ref. Temp & Temp. Coeff in EC Mode
- 1000 Samples Storage Facility
- Printer Attachment Facility



1601

## µP Conductivity/TDS Meter - 1601

### SALIENT FEATURES

- Provision for variable reference temperature & temperature coefficient.
- Facility for measurement of absolute cell constant. Adjustment of cell constant from 0.05 to 10.5
- Measures Conductivity, TDS & Temperature
- Temperature compensation from 0 to 50°C (Auto/Manual)
- Sample storage of 1000 samples
- Printer attachment facility

### TECHNICAL SPECIFICATIONS

PARAMETER	CONDUCTIVITY	TDS	TEMP.
➤ RANGE SELECTION	Automatic	Automatic	-
➤ RANGE	0-20, 0-200µS	0-20,0-200 ppm	0-100°C
➤ ACCURACY	±0.5%fs±1Digit	±1% FS±1Digit	±0.1°C
➤ RESOLUTION	0.01µS	0.01ppm	0.1°C
➤ CELL CONSTANT	Adjustable (0.05-10.5)	Adjustable (0.05-10.5)	-
➤ TEMP. COMPENSATION	0-100°C (Auto/Manual)	0-100°C (Auto/Manual)	-
➤ TEMPERATURE COEFFICIENT	Adjustable (0.1-4.0%)	Adjustable (0.1-4.0%)	-
➤ READOUT	128x64 dots graphical LCD Display		
➤ STORAGE	Up to 1000 Samples		
➤ KEY BOARD	8 Soft Touch Membrane Type Keys		
➤ PRINTER	RS 232 for serial printer using 80 column dot matrix printer		
➤ POWER	12V DC using 230V ± 10% AC Adaptor		

### CONDUCTIVITY APPLICATIONS (Industry)

- Iron & Steel
- Brewing & Beverage
- Food Processing
- Paper Industry
- Water Production
- Pharmaceuticals



601

## Digital Conductivity Meter - 601, 602 & 611

### TECHNICAL SPECIFICATIONS

MODEL	601	602	611
➤ DISPLAY	3½ Digit LED	3½ Digit LED	3½ Digit LED
➤ MEASUREMENT	Conductivity & Temperature	Conductivity & Temperature	Conductivity
➤ COND. RANGES	Five Ranges - 0 - 200 µS/cm 0 - 2 mS/cm 0 - 20 mS/cm 0 - 200 mS/cm 0 - 1000 mS/cm	Six Ranges 0 - 20 µS/cm 0 - 200 µS/cm 0 - 2 mS/cm 0 - 20 mS/cm 0 - 200 mS/cm 0 - 1000 mS/cm	Five Ranges - 0 - 200 µS/cm 0 - 2 mS/cm 0 - 20 mS/cm 0 - 200 mS/cm
➤ RANGE SELECTION	Automatic in 5 Ranges -5 to 110°C	Automatic in 6 Ranges -5 to 110°C	Automatic in 5 Ranges -5 to 110°C
➤ TEMP. RANGE	-5 to 110°C	-5 to 110°C	-5 to 110°C
➤ ACCURACY	COND. ±0.5 % FS ± 1Digit TEMP. ±0.1°C ± 1Digit	COND. ±0.5 % FS ± 1Digit TEMP. ±0.1°C ± 1Digit	COND. ±0.5 % FS ± 1Digit TEMP. -
➤ TEMPERATURE COMPENSATION	Auto: 0 to 50 °C Manual: 0 to 50 °C	Auto: 0 to 50 °C Manual: 0 to 50 °C	Manual: 0 to 50°C
➤ CELL CONSTANT	Adjustable on Digital Display		
➤ MEASURING CELL	Platinum DIP Type		
➤ CELL CONST. MEASUREMENT	Auto	Auto	Auto
➤ RESOLUTION	COND. 0.1µS/cm TEMP. 0.1°C	COND. 0.01µS/cm TEMP. 0.1°C	COND. 0.1µS/cm TEMP. -
➤ POWER	12V DC using 230V± 10% AC Adapter		
➤ DIMENSIONS	270x202x80 mm (lxbxh)		
➤ WEIGHT	0.8 Kg approx.		
➤ ACCESSORIES	Conductivity Cell, Operation Manual, Dust Cover, Cell Stand, Temperature Probe (with models 602 and 601)		

### SALIENT FEATURES

- Microcontroller Based
- Highly Stable & Accurate
- Auto Ranging Facility
- Cell Constant Measurement and Adjustment Facility
- 3½ Digit Display
- Automatic Temperature Compensation Facility(601, 602 only)



alpha 06

## Digital Conductivity Meter - alpha 06

### TECHNICAL SPECIFICATIONS

➤ DISPLAY	3½ Digit LED
➤ RANGE	0 to 200µS/cm 0 to 2 mS/cm 0 to 20 mS/cm 0 to 200 mS/cm 0 to 1000 mS/cm
➤ RESOLUTION	0.1 µS/cm
➤ ACCURACY	±1% FS ±1Digit
➤ TEMP. COMPENSATION	Manual : 0 to 50°C
➤ CELL CONSTANT	Adjustable on Digital Display
➤ MEASURING CELL	Platinum DIP Type
➤ POWER	230V ±10% AC, 50 Hz
➤ DIMENSIONS	76x275x175 mm (L x B x H)
➤ ACCESSORIES	Conductivity Cell, Operation Manual, Dust Cover

New





641

#### SALIENT FEATURES

- Micro-controller Based
- Measures Conductivity and TDS
- Auto Ranging Facility
- Auto Cell Constant Measurement
- 3½ Digit Display

### Digital Conductivity / TDS Meter - 641

#### TECHNICAL SPECIFICATIONS

➤ PARAMETER	<b>Conductivity</b>	<b>TDS</b>
➤ RANGES	Five Ranges 0 - 200 µS/cm 0 - 2 mS/cm 0 - 20 mS/cm 0 - 200 mS/cm 0 - 1000 mS/cm Automatic	Five Ranges 0 - 200 ppm 0 - 2 ppt 0 - 20 ppt 0 - 200 ppt 0 - 1000 ppt Automatic
➤ RANGE SELECTION	Automatic	Automatic
➤ RESOLUTION	0.1 µS/cm in lowest range	0.1 ppm in lowest range
➤ ACCURACY	± 0.5 % FS ± 1Digit	
➤ DISPLAY	3½ Digit Bright Red LED Display	
➤ CELL CONSTANT	Adjustable on Digital Display	
➤ TEMP. COMPENSATION	Manual : 0 to 50°C	
➤ AUTO CELL CONSTANT MEASUREMENT	Available using standard solution	
➤ MEASURING CELL	Platinum DIP Type	
➤ POWER	12V DC using 230V ± 10% AC Adapter	
➤ DIMENSIONS	270 x 202 x 80 mm (l x b x h approx.)	
➤ WEIGHT	0.8 Kg approx.	
➤ ACCESSORIES	Conductivity/TDS Cell , Operation Manual, Cell Stand, Dust Cover, 12V Adapter	

### Digital pH, Cond. & Temp. Meter - 181

#### TECHNICAL SPECIFICATIONS

<b>GENERAL</b>	
➤ DIGITAL DISPLAY	3½ digit LED
➤ POWER	230V AC ± 10% 50Hz.
➤ DIMENSIONS	275 x 190 x 78 mm
➤ WEIGHT	2.5 Kg. (Approx.)
<b>PARAMETERS</b>	
<b>pH</b>	
➤ RANGE	0 - 14pH
➤ RESOLUTION	0.01pH
➤ ACCURACY	± 0.01 pH ± 1 digit
➤ INPUT IMPEDANCE	>10 <sup>12</sup> ohms
➤ TEMP. COMPENSATION	ATC
➤ SLOPE CORRECTION	80 to 120%
<b>CONDUCTIVITY</b>	
➤ RANGE	0 to 20 mS/cm in 2 ranges
➤ ACCURACY	±0.5% ± 1digit
➤ RESOLUTION	1µS/cm
➤ OSCILLATOR	1KHz in-built
➤ CELL CONSTANT	0.2 to 1.8 adjustable directly on digital display
➤ TEMP. COMPENSATION	ATC
<b>TEMPERATURE</b>	
➤ RANGE	0 - 100°C
➤ RESOLUTION	0.1°C
➤ ACCURACY	±0.2%± 1digit
➤ SENSOR	Semiconductor Probe

#### APPLICATIONS (Industry)

- Iron & Steel
- Brewing & Beverage
- Food Processing
- Papermaking
- Water Production
- Pharmaceuticals



651

#### SALIENT FEATURES

- Microcontroller Based
- Auto Ranging Facility
- Auto Cell Constant Measurement
- 3½ Digit Display
- Measures TDS and Temperature (model 652 only)
- Automatic Temperature Compensation(model 652 only)

### Digital TDS Meter - 651/652

#### TECHNICAL SPECIFICATIONS

➤ DISPLAY	3½ Digit Bright Red LED Display
➤ PARAMETERS	TDS & Temperature (Model 652) TDS (Model 651)
➤ RANGES	TDS: 0-200 ppm, 0-2 ppt, 0-20 ppt, 0-200.0 ppt, 0-1000 ppt Temperature: 0 to 110°C (Model 652 Only)
➤ RANGE SELECTION	Automatic
➤ RESOLUTION	TDS : 0.1 ppm, Temp: 0.1°C (Model 652) TDS : 0.1 ppm (Model 651)
➤ ACCURACY	TDS : ±0.5 % FS ± 1Digit, Temp: ±0.1°C ± 1Digit (Model 652) TDS : ±0.5 % FS ± 1Digit (Model 651)
➤ TEMP. COMPENSATION	Auto/Manual : 0 to 50°C (Model 652) Manual : 0 to 50°C (Model 651)
➤ CELL CONSTANT	Adjustable on Digital Display
➤ AUTO CELL CONSTANT	Available using standard solution
➤ MEASURING CELL	Platinum DIP Type
➤ DIMENSIONS	270 x 202 x 80 mm (LxBxH) approx.
➤ WEIGHT	0.8 Kg approx.
➤ POWER	12V DC using 230V± 10% AC Adapter
➤ ACCESSORIES	TDS Cell , Operation Manual, Cell Stand, Dust Cover, 12V Adapter Temperature Probe(only in 652)



alpha 05

### Digital TDS Meter - alpha 05

#### SALIENT FEATURES

- Highly Stable & Accurate
- Cell Constant Adjustment Facility
- 3½ Digit Display

#### TECHNICAL SPECIFICATIONS

➤ DISPLAY	3 ½ Digit LED
➤ MEASUREMENT	TDS
➤ RANGE	0 To 200 ppm 0 to 2.000 ppt 0 to 20.00 ppt 0 to 200.0 ppt 0 to 1000 ppt
➤ RESOLUTION	0.1 ppm
➤ ACCURACY	± 1% FS ± 1 Digit
➤ TEMP. COMPENSATION	Manual : 0 to 50°C
➤ CELL CONSTANT	Adjustable on Digital Display
➤ MEASURING CELL	Platinum DIP Type
➤ POWER	230V ±10% AC, 50 Hz
➤ DIMENSIONS	76x275x175 mm (L x B x H)
➤ ACCESSORIES	TDS Cell , Operation Manual, Dust Cover, Cell Stand

New





## Digital Salinity Meter - 671



671

### SALIENT FEATURES

- Microcontroller Based
- Auto Ranging Facility
- Auto Cell Constant Measurement
- 3½ Digit Display

### TECHNICAL SPECIFICATIONS

- DISPLAY 3½ Digit Bright Red LED Display
- MEASUREMENT Salinity
- RANGES 0 - 2.000 ppt, 0 - 20.00 ppt, 0 - 50.0 ppt
- RANGE SELECTION Automatic
- ACCURACY ±0.5 % FS ± 1 Digit
- TEMP. COMPENSATION Manual : 0 to 50 °C
- CELL CONST. MEASUREMENT Automatic, using standard solution
- MEASURING CELL Platinum Dip Type
- RESOLUTION 0.001 ppt
- POWER 12V DC using 230V± 10% AC Adapter
- DIMENSIONS 270 x 202 x 80 mm (l x b x h approx.)
- WEIGHT 0.8 Kg approx.
- ACCESSORIES Salinity Cell , Operation Manual, Cell Stand, Dust Cover, 12V Adapter



## Digital Turbidity Meter - 335

335

### SALIENT FEATURES

- 3½ Digit LED Display
- Measurements up to 1000 NTU in 4 Ranges
- Reliable & Accurate Results
- Best Suitable for Sewage and Drinking Water Testing

### TECHNICAL SPECIFICATIONS

- DISPLAY 3½ Digit LED Display
- DETECTOR Photodiode
- RANGE 0 to 1000 NTU in 4 ranges  
0-2, 20, 200 & 1000 NTU
- RESOLUTION 0.01 NTU
- ACCURACY ±3% FS
- SAMPLE SYSTEM 60 x 25mm Clear Glass Test Tube
- LIGHTSOURCE LED
- POWER 230V AC ± 10%, 50Hz.
- DIMENSIONS 280 x 175 x 110 mm (Approx.)
- WEIGHT 3.0 Kg
- ACCESSORIES Test Tube Set of 5 : 1 Set  
Operation Manual : 1 No.  
Dust Cover : 1 No.



331

## Digital Turbidity Meters - 331/341

### SALIENT FEATURES

- Display - 3½ digit LED
- 30mm flat bottom Test Tube
- Range 0 - 1000 NTU (in Model 331)
- Ranges 0 - 200 NTU (in Model 341)
- Highly Stable & Accurate

### TECHNICAL SPECIFICATIONS

- | Product         | Digital Turbidity Meter (331)                 | Digital Nephelometer (341) |
|-----------------|---|----------------------------|
| ➤ DISPLAY       | 3½ Digit LED                                  | 3½ Digit LED               |
| ➤ DETECTOR      | Photocell/Photodiode                          | Photocell/Photodiode       |
| ➤ RANGE         | 0 to 1000 NTU in 2 ranges                     | 0 to 200 NTU in 2 ranges   |
| ➤ RESOLUTION    | 1 NTU   | 0.1 NTU                    |
| ➤ ACCURACY      | ±3% FS ±1digit                                | ±2% FS ±1digit             |
| ➤ SAMPLE SYSTEM | 60 x 25mm Clear Glass Test Tube               |                            |
| ➤ LIGHT SOURCE  | LED   |                            |
| ➤ POWER         | 230V ± 10%, 50Hz. AC                          |                            |
| ➤ DIMENSIONS    | 280 x 175 x 110 mm                            |                            |
| ➤ ACCESSORIES   | •Test Tubes Set •Operation Manual •Dust Cover |                            |

### APPLICATIONS

- Natural Waters
- Sewage Wastes
- Medical, Biomedical & Microbial Studies
- Agriculture
- Foods & Drugs
- Boiler Feed Water

1801

## Microprocessor DO Meter - 1801

### SALIENT FEATURES

- Microcontroller Based
- Highly Sensitive & Accurate
- Range - 0 to 20 ppm
- 1000 Sample Storage Memory
- Manual / Auto Temperature Compensation
- Printer Interface Available

### TECHNICAL SPECIFICATIONS

- DISPLAY 16x2 Line LCD display with backlit
- RESOLUTION DO: 0.1 ppm, Temp.: 0.1°C
- ACCURACY DO ±0.2 ppm, Temp. ±0.2°C
- CALIBRATION Automatic
- TEMP. COMPENSATION Auto/Manual 0 to 100°C
- STORAGE Up to 1000 Samples
- KEY BOARD 8 Soft Touch Membrane Type Keys
- PRINTER Provision for attachment of dot matrix printer with Centronics interface
- POWER 230V ± 10%, 50Hz. AC
- WEIGHT 2.5 Kg (Approx.)







801

## Digital Dissolved Oxygen Meter - 801 & 811

### SALIENT FEATURES

- Manual temperature compensation
- Available with magnetic stirrer (801)
- Temperature indication (801)
- Highly sensitive & stable

### TECHNICAL SPECIFICATIONS

- DISPLAY 3½ Digital Bright Red LED
- RANGE DO 0 to 20 ppm TEMPERATURE 0 to 60°C (801)
- RESOLUTION DO 0.1 ppm TEMPERATURE 0.1°C (801)
- ACCURACY DO ±0.1 ppm TEMPERATURE ±0.2°C (801)
- TEMP. COMPENSATION Manual 0 to 50°C
- CALIBRATION Manual
- ACCESSORIES Gold/Silver Amperometric DO Probe, Set of DO Membranes, Dust Cover, Operation Manual, Temperature Probe (80), Magnetic Stirrer & Capsules (801)



## pH/Cond./TDS/Salt/Temp. Waterproof Tester - 7200

7200

### TECHNICAL SPECIFICATIONS

- DISPLAY Large LCD to display parameters, Battery level, ATC & Temperature
- RANGE pH: -2 to 16.00 TDS: 0 to 1300 ppm, Cond.: 0 to 2000 µS, 1.30 - 13.00 ppt 2.00 - 20.00 mS mV: -1000 to +1000mV Salt: 0 to 1000 ppm, Temp.: 0 to 90.0°C 1.00 to 12.00ppt 32 to 194.0°F
- RESOLUTION pH: 0.01pH, mV : 1 mV, TDS: 1 ppm/0.01 ppt, Cond.: 1 µS/0.01mS Temp.: 0.1°C/°F, Salt : 1 ppm/0.01 ppt
- TEMP. COMP Automatic Temp. Compensation (ATC) with temp. display
- TEMP. COEFF. 2% per °C
- SENSOR User Replaceable
- WATER PROOF As per IP - 57 water proofing standard
- CALIBRATION pH : 4.00, 7.00, 10.01 Cond. : 0 µS, 1413µS, 12.88 mS
- POWER DC 1.5 V x 4 Battery (UM-4/AAA) Auto Power off after 10 minutes

### SALIENT FEATURES

- Push Button Calibration, Water-proof IP-57, Temperature coefficient - 2% per °C, Self-Diagnostics message for low battery.
- Auto Power-off after 10 minutes, Hold Function to freeze reading.



7021

## Cond./TDS/Salt/Temp. Waterproof Tester - 7021

### TECHNICAL SPECIFICATIONS

- DISPLAY Large LCD to display parameters, ATC, Temp. & Battery level,
- RANGE TDS: 0 to 1300 ppm, Cond.: 0 to 2000 µS, 1.30 - 13.00 ppt 2.00 - 20.00 mS Salt: 0 to 1000 ppm, Temp.: 0 to 90.0°C 1.00 - 12.00 ppt 32 to 194.0°F
- RESOLUTION TDS/Salt : 1 ppm/0.01 ppt Cond. : 1 µS/0.01 mS Temp.: 0.1 C°/F
- TEMP. COMP. Automatic Temp. Compensation (ATC) with temp. display
- TEMP. COEFF. 2% per °C
- SENSOR User Replaceable
- WATERPROOF As per IP - 57 water proofing standard
- TDS FACTOR 0.67
- POWER DC 1.5 V X 4 Battery (UM-4/AAA), Auto Power off after 10 minutes
- ACCESSORIES Standard Calibration Solution (50 ml), Battery, Lanyard, Instruction Manual and Carrying Case



## pH/mV/Temp. Waterproof Tester - 7011

7011

### SALIENT FEATURES

- Push Button Calibration, Water-proof IP-57, Temperature coefficient 2% per °C, Self-Diagnostics message for low battery.
- Auto Power-off after 10 minutes, Hold Function to freeze reading.

### TECHNICAL SPECIFICATIONS

- DISPLAY Large LCD to display ATC, Temp. & Battery level
- RANGE pH : -2 to 16.00 mV : -1000 to +1000mV Temp.: 0 to 90°C
- RESOLUTION pH : 0.01 pH mV : 1 mV Temp.: 0.1°C/°F
- TEMP. Automatic Temp. Compensation (ATC) with Temp. display
- SENSOR User Replaceable
- WATERPROOF As per IP - 57 water proofing standard
- CALIBRATION 4.00, 7.00, 10.01
- POWER DC 1.5 V X 4 Battery (UM-4/AAA), Auto Power off after 10 minutes
- ACCESSORIES Standard Calibration Solution (50 ml), Battery, Lanyard, Instruction Manual and Carrying Case







1160



172

**SAILIENT FEATURES**

	1160	172	161	191
pH	✓	✓	✓	✓
Cond.	✓	✓	✓	✓
TDS	✓	✓	✓	✓
DO	✓	✓	✓	✓
mV (ORP)	✓	✓	✓	✓
Salinity	✓	✓	✓	✓
Turbidity	✓	✓	✓	✓
Colorimeter	✓	✓	✓	✓
Temp.	✓	✓	✓	✓



161



191

**WATER & SOIL ANALYSIS KITS**

**SPECIFICATIONS**



Model	1160	161	191	172
Product	µP Water & Soil Analysis Kit	Water & Soil Analysis Kit	Water & Soil Analysis Kit	Water & Soil Analysis Kit
Display	16 x 2 Characters LCD Display	3 ½ Digit LCD	3 ½ Digit LCD	3 ½ Digit LCD
<b>pH</b>				
Range	0 to 14 pH	0 to 14 pH	0 to 14 pH	0 to 14 pH
Resolution	0.01 pH	0.01 pH	0.01 pH	0.01 pH
Accuracy	0.01 ± 1 Digit	0.01 ± 1 Digit	0.01 ± 1 Digit	0.01 ± 1 Digit
Temp. Comp.	0 to 100C(Auto/Manual)	0 to 100C (Manual)	0 to 100C (Manual)	0 to 100C (Manual)
<b>Conductivity (E C)</b>				
Range	0-20, 0-200µS 0-2, 0-20, 0-200mS	0-200µS 0-2, 0-20, 0-200mS	0-20mS	0-20mS
Resolution	0.01µS/cm	0.1µS	0.01mS (10µS)	0.01mS (10µS)
Range Selection	Automatic	Manual	---	---
Accuracy	± 0.5% FS ± 1 Digit	± 0.5% FS ± 1 Digit	± 0.5% FS ± 1 Digit	± 0.5% FS ± 1 Digit
Cell Constant	Adjustable (0.05 to 10.5)	Adjustable (0.4 to 1.5)	Pre-Adjusted	Pre-Adjusted
Temp. Coefficient	Adjustable (0.4 to 4.0)	2%	2%	2%
Temp. Comp.	5-50° (Auto/Manual)	Adjustable from table	Adjustable from Table	Adjustable from Table
Reference Temp.	Selectable (5-50C)	25C	25C	25C
<b>Temperature</b>				
Range	0-100C	0-100C	0-100C	0-100C
Resolution	0.1C	0.1C	0.1C	0.1C
Accuracy	± 0.1C ± 1 Digit	± 0.1C ± 1 Digit	± 0.1C ± 1 Digit	± 0.1C ± 1 Digit
Sensor	Semi Conductor Type	Semi Conductor Type	Semi Conductor Type	Semi Conductor Type
<b>TDS</b>				
Range	0-20, 0-200ppm 0-2, 0-20, 0-200 ppt.	0-200ppm 0-2, 0-20, 0-200 ppt.	0-20 ppt	0-20 ppt
Range Selection	Automatic	Manual	---	---
Resolution	0.01 ppm	0.1 ppm	0.01ppt	0.01ppt
Accuracy	± 0.5% FS ± 1 Digit	± 0.5% FS ± 1 Digit	± 0.5% FS ± 1 Digit	± 0.5% FS ± 1 Digit
Cell Constant	Adjustable (0.05 to 10.5)	0.4 to 1.5 on display	Pre-Adjusted	Pre-Adjusted
<b>DO</b>				
Range	0-20 ppm	0-20 ppm	0-20 ppm	0-20 ppm
Resolution	0.1 ppm	0.1 ppm	0.1 ppm	0.1 ppm
Accuracy	0.1 ppm ± 1 Digit	0.1 ppm ± 1 Digit	0.5 ppm ± 1 Digit	0.5 ppm ± 1 Digit
Temp. Comp.	Auto/Manual (5C to 55C)	Manual (5C to 55C)	Manual (5C to 55C)	Manual (5C to 55C)
DO Sensor	Gold/Silver Probe	Gold/Silver Amperometric Probe	Gold/Silver Amperometric Probe	Gold/Silver Amperometric Probe
<b>mV (ORP)</b>				
Range	0 to ± 1999.9 mV	0 to ± 1999 mV	---	---
Resolution	0.1 mV	1 mV	---	---
Accuracy	± 0.1 mV ± 1 digit	± 1 mV ± 1 digit	---	---
<b>Turbidity</b>				
Range	---	---	0-1000NTU	0-1000NTU
Resolution	---	---	1 NTU	1 NTU
Accuracy	---	---	± 3% FS ± 1 Digit	± 3% FS ± 1 Digit
Sample System	---	---	30mm Clear Glass Tube	30mm Clear Glass Tube
<b>Salinity</b>				
Range	0-20,0-200ppm,0-2,0-20,0-50ppt	0 - 50 ppt	0 - 50 ppt	0 - 50 ppt
Resolution	0.01 ppm	0.1 ppt	0.1 ppt	0.1 ppt
Accuracy	± 1% of Range ± 1 Digit	± 0.5% FS ± 1 Digit	± 0.5% FS ± 1 Digit	± 0.5% FS ± 1 Digit
<b>Colorimeter</b>				
Range	---	---	---	Abs. 0-1.99 A,
Filters	---	---	---	Filters - 5 Nos.
Resolution	---	---	---	Resolution - 0.01 Abs.
Power Supply	6V Rechargeable Battery or 230V±10%AC, 50Hz	1.5Vx6Dry Cells or 230V±10%AC, 50Hz	12V Rechargeable Battery or 230V±10%AC, 50Hz	12V Rechargeable Battery or 230V±10%AC, 50Hz
Storage	1000 sample	---	---	---
<b>Standard Accessories</b> pH Electrode, Cond./TDS/Salinity Cell, Temp. Probe, DO Probe, Dry Cell container (161), Main Lead, Operation Manual, Bottles for pH Solution & pH Tablets Bottles (161 & 191), Turbidity Test Tube Set (191)				





131



621

**SAILIENT FEATURES**

	131/132	621	661	831
<b>RANGE</b>	0 - 14 pH	0-1999 $\mu$ S, 0-19.99 mS	0-1999 ppm, 0-19.99 ppt	0 - 19.9 ppm
<b>RESOLUTION</b>	0.01 pH	1 $\mu$ S	1 ppm	0.1 ppm
<b>IMPEDANCE</b>	$>10^{12}$ ohms	-	-	-
<b>SENSOR</b>	Combination pH Electrode	Cond. Cell (Dip type)	TDS Cell (Dip type)	Amperometric DO Probe
<b>BATTERY</b>	9V DC (Eveready 216 or equ.)	9V DC (Eveready 216 or equ.)	9V DC (Duracell battery or equ.)	9V DC (Eveready 216 or equ.)
<b>ACCURACY</b>	0.01pH	$\pm 1\%$ FS	$\pm 1\%$ FS	$\pm 2\%$ FS
<b>TEMP. COMP.</b>	0 - 100°C (Manual)	-	-	5 to 55°C
<b>DISPLAY</b>	3½ digit LCD	3½ digit LCD	3½ digit LCD	3½ digit LCD
<b>SIZE</b>	180 x 85 x 30 mm	180 x 85 x 30 mm	180 x 85 x 30 mm	180 x 85 x 30 mm
<b>WEIGHT</b>	250 gm. (Approx)	250 gm. (Approx.)	250 gm. (Approx.)	250 gm. (Approx.)



661



831



**NSIC**

AN ISO 9001 : 2008 CERTIFIED CO.